



**BUS  
CONNECTS**  
SUSTAINABLE TRANSPORT FOR A BETTER CITY.



Rialtas  
na hÉireann  
Government  
of Ireland

Tionscadal Éireann  
Project Ireland  
**2040**

**FOIRM FÓGRA ATÁ LE FOILSIÚ DE BHUN ALT 51(3)(a) D'ACHT NA mBÓITHRE, 1993 (ARNA LEASÚ), I NDÁIL LE HIARRATAS AR FHORBAIRT BHÓTHAIR BHEARTAITHE A CHEADÚ AGUS LE TUARASCÁIL AR MHEASÚNACHT TIONCHAIR TIMPEALLACHTA AGUS RÁITEAS TIONCHAIR NATURA A THÍOLACADH.**

## AN SCÉIM CROÍCHONAIR BUS Ó THEACH MEALÓG/RÁTH FEARNÁIN GO LÁR NA CATHRACH

Rinne an tÚdarás Náisiúnta Iompair iarratas faoi alt 51(2) d'Acht na mBóithre, 1993 (arna leasú), chuig an mBord Pleanála ('an Bord') ar cheadú i ndáil le forbairt bhóthair bheartaithe arb é a bheidh inti:

An Scéim Croíchonair Bus ó Theach Mealóg/Ráth Fearnáin go Lár na Cathrach a thógáil, atá thart ar 10 km ar fad san iomlán. Pointe tosaithe na scéime is ea Bóthar na Gráinsí/an R821 ag an acomhal le hAscaill an Gharráin Chnó, agus leanfaidh sí ar aghaidh ansin feadh Bhóthar na Gráinsí/an R821, Bhóthar Ráth Fearnáin/an R115, Bhóthar Ráth Fearnáin/an R114, Bhóthar Thír an Iúir Thoir, Bhóthar Ráth Garbh, Bhóthar Ráth Maonais Íochtarach, Shráid Richmond Theas, Shráid Camden Uachtarach agus Íochtarach, Shráid Loch Garman, Chnoc Réamainn, Shráid Aungier agus Shráid Sheoirse Mhór Theas. Críochnóidh sí ag Sráid an Dáma. Tá an Chroíchonair Bus ródaíthe freisin feadh Bhóthar Thamhlachta/an R137, ag tosú di lastoir de chómhálartú acomhal 11 den M50, agus tá sí ródaíthe tríd an R137 feadh Bhóthar Thamhlachta agus Bhóthar Theach Mealóg, trí Shráidbhaile Theach Mealóg, ag críochnú di ag Crosaire Thír an Iúir. De bhreis ar a bhfuil thuas, soláthraítear saoráidí malartacha rothaíochta feadh Bhóthar Chrois Araild/Bhóthar Thír an Iúir Thuaidh idir Crois Thír an Iúir agus Ascaill Radharc na Páirce, agus feadh Ascaill Pháirc na dTor, Pháirc Wasdale, Gharrán Wasdale, Bhóthar Shióin agus Bhóthar Orwell, a bhfuil gach ceann díobh lonnaithe i gContae Bhaile Átha Cliath agus laistigh de limistéir riaracháin Chomhairle Cathrach Bhaile Átha Cliath, Chomhairle Contae Bhaile Átha Cliath Theas agus Chomhairle Contae Dhún Laoghaire-Ráth an Dúin, atá comhdhéanta díobh seo, i measc nithe eile:

- 17.4 km (déthreo) de bhonneagar tosaíochta bus agus de bhainistíocht tráchta;
- 23.3 km (san iomlán sa dá threo) de bhonneagar rothaíochta agus de shaoráidí rothaíochta;
- Saoráidí nua/athchóirithe do choisithe agus cosáin nua/athchóirithe a sholáthar feadh na scéime, agus oibreacha coimhdeacha gaolmhara a sholáthar;
- 32 uasghrádú acomhail agus oibreacha coimhdeacha gaolmhara a sholáthar;
- 105 cinn nua/athchóirithe de shaoráidí taobhiontrála tábla ardaithe;
- Stadanna bus láithreacha a athchumrú, a fhágfaidh go mbeidh 60 saoráid stad bus nua ann;
- Oibreacha Ríochta Poiblí, lena n-áirítear tírdhreachú, cur, troscán sráide, soilsiú sráide, ballaí teorann agus bearta draenála uirbí inbhuanaithe;
- Oibreacha talún a bhaineann le bóithre, lena n-áirítear ábhar do-ghlactha a thochailt, ábhar a allmhairiú agus ábhair a stóráil go sealadach;
- Pábháil bhóthair, comharthaíocht, líneáil agus oibreacha coimhdeacha a sholáthar;
- Geataí, fála agus oibreacha cóireála teorann a sholáthar;
- Bonneagar draenála nua agus claonta a sholáthar;
- Fónais agus seirbhísí a chlaonadh, lena n-áirítear oibreacha coimhdeacha gaolmhara; agus
- Oibreacha cóiríochta a thógáil, lena n-áirítear oibreacha cóireála teorann agus oibreacha coimhdeacha grádaithe agus tírdhreachaithe; mar aon leis na hoibreacha coimhdeacha agus iarmhartacha uile a bhaineann leo sin.

Léirítear ar an léarscáil a ghabhann leis seo suíomh na forbartha bóthair beartaithe. I ndáil leis an bhforbairt bhóthair bheartaithe, rinne an tÚdarás Náisiúnta Iompair an Tuarascáil ar Mheasúnacht Tionchair Timpeallachta a thíolacadh don Bhord, ar tuarascáil i a ullmhaíodh de réir alt 50 d'Acht na mBóithre, 1993 (arna leasú), agus de réir Threoir 2011/92/AE ó Pharlaimint na hEorpa agus ón gComhairle an 13 Nollaig 2011 maidir le measúnacht a dhéanamh ar éifeachtaí tionscadal poiblí agus príobháideach áirithe ar an gcomhshaol arna leasú le Treoir 2014/52/AE ó Pharlaimint na hEorpa agus ón gComhairle an 16 Aibreán 2014.

Ullmhaíodh Ráiteas Tionchair Natura freisin agus tíolacadh don Bhord é i ndáil leis an bhforbairt bhóthair bheartaithe faoi Chuid XAB den Acht um Pleanáil agus Forbairt, 2000 (arna leasú).

Féadfar cóip de dhoiciméid an iarratais, den Tuarascáil ar Mheasúnacht Tionchair Timpeallachta agus den Ráiteas Tionchair Natura a iniúchadh ag na suíomhanna seo a leanas ar laethanta oibre le linn na n-uaireanta atá liostaithe thíos ón **Máirt an 25 Aibreán** go dtí an **Mháirt an 20 Meitheamh 2023**.

An tÚdarás Náisiúnta Iompair  
Dún Scéine  
Lána Fhearchair  
Baile Átha Cliath 2, D02 WT20

Uaireanta Oscailte  
9:15 go dtí 16:00 ó Luan go hAoine

An Bord Pleanála  
64 Sráid Maoilbhríde  
Baile Átha Cliath 1, D01 V902

Uaireanta Oscailte  
9:15 go dtí 17:30 ó Luan go hAoine

Féadfar cóip den Tuarascáil ar Mheasúnacht Tionchair Timpeallachta (EIAR) (nó cuid/codanna di) agus/nó den Ráiteas Tionchair Natura (NIS) a cheannach ón Údarás Náisiúnta Iompair ach na táillí seo a leanas a íoc:

Imleabhar 1 den EIAR	Achoimre Neamhtheicniúil	€15
Imleabhar 2 den EIAR	An Príomhthéacs	€150
Imleabhar 3 den EIAR	Figiúirí EIAR	€200
Imleabhar 4 den EIAR	Aguisíní EIAR	€150
NIS	Ráiteas Tionchair Natura	€90

ón Máirt an 25 Aibreán go dtí an Mháirt an 20 Meitheamh 2023.

Féadfar iarrataí ceannaigh den sórt sin a sheoladh chuig An tÚdarás Náisiúnta Iompair, Dún Scéine, Lána Fhearchair, Baile Átha Cliath 2, D02 WT20, nó chuig [info@busconnects.ie](mailto:info@busconnects.ie) nó féadfar iad a dhéanamh ach glao a chur ar 1800 303 653.

Féadfar cóip de dhoiciméid an iarratais den EIAR agus den NIS a iniúchadh agus a íoslódáil saor in aisce ar an suíomh Gréasáin de chuid an Údaráis Náisiúnta Iompair don Scéim Croichonair Bus ó Theach Mealóg/Ráth Fearnáin go Lár na Cathrach ag: [www.templeogueathfarnhamscheme.ie](http://www.templeogueathfarnhamscheme.ie)

I ndáil le hiarratas ar cheadú faoi alt 51 d'Acht na mBóithre, 1993 (arna leasú), féadfaidh an Bord, le hordú, an fhorbairt bhóthair bheartaithe a cheadú, fara nó d'éagmais modhnuithe, nó féadfaidh sé diúltú forbairt den sórt sin, nó aon chuid di, a cheadú.

Féadfar aighneachtaí/tuairimí maidir leo seo a dhéanamh i scríbhinn chuig an mBord ag An Bord Pleanála (Rannóg Bonneagair Straitéisigh), 64 Sráid Maoilbhríde, Baile Átha Cliath 1, D01 V902:

- na héifeachtaí is dóigh a bheidh ag an bhforbairt bhóthair bheartaithe ar an gcomhshaoil, má dhéantar í;
- impleachtaí na forbartha bóthair bheartaithe, má dhéantar í, do phleanáil chuí agus forbairt inchothaithe sa limistéar ina mbeartaítear an fhorbairt bhóthair bheartaithe a shuíomh; agus
- na héifeachtaí suntasacha is dóigh a bheidh ag an bhforbairt bhóthair bheartaithe ar láithreán Eorpach

idir an Mháirt an 25 Aibreán go dtí an Mháirt an 20 Meitheamh 2023.

Ní foláir táille €50 a bheith ag gabháil le haon aighneachtaí/tuairimí agus ní foláir iad a bheith faighte ag an mBord tráth nach déanaí ná 5.30pm an 20 Meitheamh 2023. Ní bheidh feidhm ag an táille sin maidir le comhlachtaí forordaithe áirithe, lena n-áirítear iad sin atá sonraithe in alt 51(3)(b) d'Acht na mBóithre, 1993 (arna leasú), ná maidir le húinéirí talún agus daoine eile a bhfuil leas dlíthiúil acu i dtalamh agus atá ag agóid i gcoinne fáil éigeantach talún a bhfuil leas den sórt sin acu ann i gcás fála éigeantáil.

Féadfar aighneachtaí/tuairimí a dhéanamh ar shuíomh Gréasáin an Bhoird Pleanála freisin ag an seoladh seo a leanas:

<https://online.pleanala.ie/en-ie/sid/observation>.

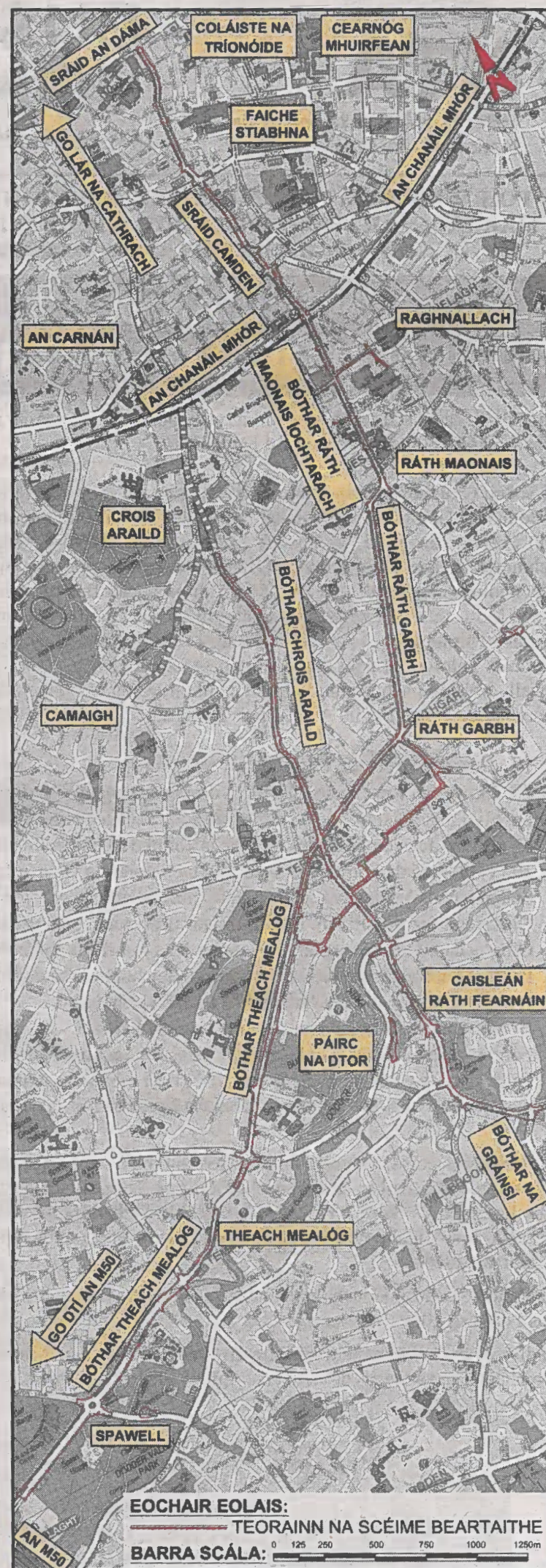
Ba cheart aon cheisteanna a bhaineann leis an bpróiseas iarratais a chur ar an Rannóg um Fhorbairt Bonneagair Straitéisigh de chuid an Bhoird Pleanála (Teil. 01-8588100).

Féadfaidh duine bailíocht aon chinnidh ón mBord ar fhorbairt bhóthair bheartaithe a cheistiú trí bhíthin iarratas a dhéanamh ar athbhreithniú breithiúnach faoi Rialacha na nUaschúirteanna (agus go háirithe Ordú 84 de Rialacha na nUaschúirteanna atá in I.R. Uimh. 15 de 1986, arna leasú) agus de réir ailt 50, 50A agus 50B den Acht um Pleanáil agus Forbairt, 2000 (arna leasú).

Féadfar faisnéis phraiticiúil faoin sásra athbhreithnithe a rochtain faoin gceannteideal seo: "Fógraí Dlí – Fógra maidir le hAthbhreithniú Breithiúnach" ar shuíomh Gréasáin an Bhoird Pleanála ag <https://www.pleanala.ie/en-IE/Judicial-Review-Notice>. Tá an fhaisnéis sin ar fáil freisin ar shuíomh Gréasáin na Seirbhíse um Fhaisnéis do Shaoránaigh ag [www.citizensinformation.ie](http://www.citizensinformation.ie).

Arna dhátú an 20ú lá seo d'Aibreán 2023.

Aidan Gallagher  
Ceann Bhoneagar BusConnects Bhaile Átha Cliath





**BUS  
CONNECTS**  
SUSTAINABLE TRANSPORT FOR A BETTER CITY.



Rialtas  
na hÉireann  
Government  
of Ireland

Tionscadal Éireann  
Project Ireland  
**2040**

**FORM OF NOTICE TO BE PUBLISHED PURSUANT TO SECTION 51(3)(a) OF THE ROADS ACT 1993 (AS AMENDED) IN RELATION TO AN APPLICATION FOR APPROVAL OF A PROPOSED ROAD DEVELOPMENT AND THE SUBMISSION OF AN ENVIRONMENTAL IMPACT ASSESSMENT REPORT AND A NATURA IMPACT STATEMENT.**

## TEMPLEOGUE / RATHFARNHAM TO CITY CENTRE CORE BUS CORRIDOR SCHEME

The National Transport Authority (NTA) has applied under section 51(2) of the Roads Act 1993 (as amended) to An Bord Pleanála ('the Board') for approval in relation to a proposed road development consisting of:

The construction of the Templeogue / Rathfarnham to City Centre Core Bus Corridor Scheme which has an overall length of approximately 10 km, and will commence on the R821 Grange Road at the junction with Nutgrove Avenue, then travel along the R821 Grange Road, the R115 Rathfarnham Road, the R114 Rathfarnham Road, Terenure Road East, Rathgar Road, Rathmines Road Lower, Richmond Street South, Camden Street Upper and Lower, Wexford Street, Redmond's Hill, Aungier Street, South Great George's Street and terminates at Dame Street. The Core Bus Corridor is also routed along the R137 Tallaght Road, commencing east of the M50 junction 11 interchange and is routed via the R137 along Tallaght Road and Templeogue Road, through Templeogue Village, terminating at Terenure Cross. In addition to the above, alternative cycle facilities are provided along Harold's Cross Road / Terenure Road North between Terenure Cross and Parkview Avenue, as well as along Bushy Park Road, Wasdale Park, Wasdale Grove, Zion Road and Orwell Road, all in the County of Dublin and within the Dublin City Council (DCC), South Dublin County Council (SDCC) and Dún Laoghaire-Rathdown County Council (DLRCC) administrative areas, comprising inter alia:

- 17.4 km (two-way) of bus priority infrastructure and traffic management;
- 23.3 km (total both directions) of cycling infrastructure and facilities;
- Provision of new/refurbished pedestrian facilities and footpaths along the scheme and associated ancillary works;
- Provision of 32 junction upgrades and associated ancillary works;
- Provision of 105 new/refurbished raised table side entry facilities;
- Reconfiguration of existing bus stops resulting in 60 number new bus stop facilities;
- Public Realm works including landscaping, planting, street furniture, street lighting, boundary walls and sustainable urban drainage (SUDs) measures;
- Roads associated earthworks including excavation of unacceptable material, importation of material and temporary storage of materials;
- Provision of road pavement, signing, lining and ancillary works;
- Provision of gates, fencing and boundary treatment works;
- Provision of new and diverted drainage infrastructure;
- Diversion of utilities and services including associated ancillary works; and
- Construction of accommodation works including boundary treatments and ancillary grading and landscaping works;

together with all ancillary and consequential works associated therewith.

The location of the proposed road development is illustrated on the accompanying map. The NTA has submitted to the Board the Environmental Impact Assessment Report prepared in accordance with Section 50 of the Roads Act 1993 (as amended) and Directive 2011/92/EU of the European Parliament and of the Council of 13 December 2011 on the assessment of the effects of certain public and private projects on the environment as amended by Directive 2014/52/EU of the European Parliament and of the Council of 16 April 2014 in respect of the proposed road development.

A Natura Impact Statement has also been prepared and has been submitted to the Board in respect of the proposed road development under Part XAB of the Planning and Development Act 2000 (as amended).

A copy of the application documentation, Environmental Impact Assessment Report and the Natura Impact Statement may be inspected at the following locations on working days during the hours listed below from **Tuesday 25<sup>th</sup> April to Tuesday 20<sup>th</sup> June 2023**.

**National Transport Authority**  
Dún Scéine  
Harcourt Lane  
Dublin 2, D02 WT20

**Opening Hours**  
Monday to Friday 9:15 to 16:00

**An Bord Pleanála**  
64 Marlborough Street  
Dublin 1, D01 V902

**Opening Hours**  
Monday to Friday 9:15 to 17:30

A copy of Environmental Impact Assessment Report (EIAR) (or part(s) thereof) and/or the Natura Impact Statement (NIS) may be purchased from the National Transport Authority on payment of the following fees:

EIAR Volume 1	Non-Technical Summary	€15
EIAR Volume 2	Main Text	€150
EIAR Volume 3	EIAR Figures	€200
EIAR Volume 4	EIAR Appendices	€150
NIS	Natura Impact Statement	€90

from Tuesday 25<sup>th</sup> April to Tuesday 20<sup>th</sup> June 2023.

Such purchase requests may be sent to National Transport Authority, Dún Scéine, Harcourt Lane, Dublin 2, D02 WT20 or [info@busconnects.ie](mailto:info@busconnects.ie) or by calling 1800 303 653.

A copy of the application documentation, EIAR and NIS may be inspected and downloaded free of charge at the National Transport Authority website for the Templeogue / Rathfarnham to City Centre Core Bus Corridor Scheme at: [www.templeoguerathfarnhamscheme.ie](http://www.templeoguerathfarnhamscheme.ie)

The Board may, in relation to an application for approval under section 51 of the Roads Act 1993 (as amended), by order, approve the proposed road development with or without modifications or it may refuse such development or any part thereof.

Submissions/observations may be made in writing to the Board at An Bord Pleanála (Strategic Infrastructure Division), 64 Marlborough Street, Dublin 1, D01 V902 in relation to:

- the likely effects on the environment of the proposed road development, if carried out;
- the implications of the proposed road development, if carried out, for proper planning and sustainable development in the area in which it is proposed to situate the proposed road development; and
- the likely significant effects of the proposed road development on a European site

between Tuesday 25<sup>th</sup> April and Tuesday 20<sup>th</sup> June 2023.

Any submissions/observations must be accompanied by a fee of €50 and must be received by the Board not later than 5.30 p.m. on the 20<sup>th</sup> June 2023. This fee will not apply to certain prescribed bodies including those specified in section 51(3)(b) of the Roads Act 1993 (as amended) or to landowners and others with a legal interest in land who are objecting to compulsory acquisition of land in which they have such an interest in a compulsory acquisition case.

Submissions/observations can also be made on the An Bord Pleanála website at the following address: <https://online.pleanala.ie/en-ie/sid/observation>.

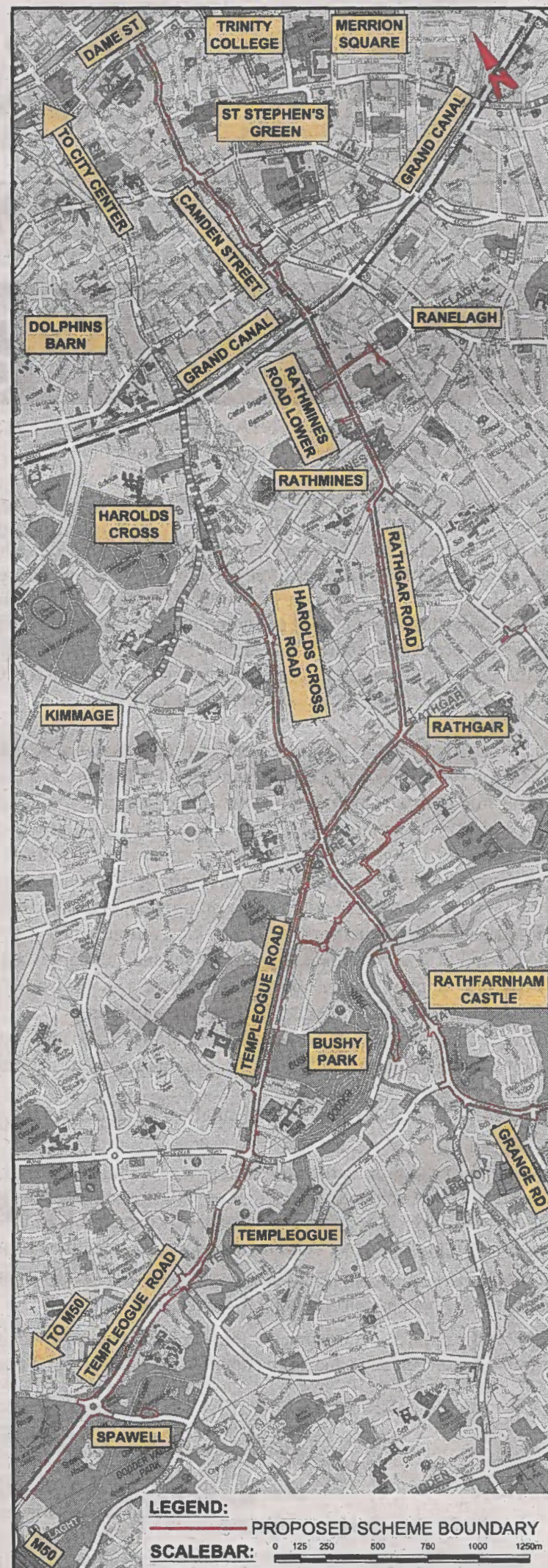
Any enquiries relating to the application process should be directed to the Strategic Infrastructure Development Section of An Bord Pleanála (Tel. 01-8588100).

A person may question the validity of any decision by the Board on a proposed road development by way of an application for judicial review under the Rules of the Superior Courts (and in particular Order 84 of the Rules of the Superior Courts contained in S.I. No. 15 of 1986 as amended) and in accordance with sections 50, 50A and 50B of the Planning and Development Act 2000 (as amended).

Practical information on the review mechanism can be accessed under the heading: "Legal Notices - Judicial Review Notice" on An Bord Pleanála website <https://www.pleanala.ie/en-IE/Judicial-Review-Notice>. This information is also available on the Citizens Information Service website [www.citizensinformation.ie](http://www.citizensinformation.ie).

Dated this day 20<sup>th</sup> April 2023.

Aidan Gallagher  
Head of BusConnects Dublin Infrastructure





**BUS  
CONNECTS**  
SUSTAINABLE TRANSPORT FOR A BETTER CITY.



Rialtas  
na hÉireann  
Government  
of Ireland

Tionscadal Éireann  
Project Ireland  
**2040**

**FOIRM FÓGRA FAOI ORDÚ CEANNAIGH ÉIGEANTAIGH FAOI ALT 76 D'ACHT NA dTITHE, 1966, AGUS FAOIN TRÍÚ SCEIDEAL A GHABHANN LEIS, ARNA LEATHNÚ LE hALT 10 DEN ACHT RIALTAIS ÁITIÚIL (UIMH. 2), 1960, ATÁ LE FOILSIÚ DE RÉIR AIRTEAGAL 4(a) DEN TRÍÚ SCEIDEAL A GHABHANN LE hACHT NA dTITHE, 1966, ARNA LEASÚ LEIS AN ACHT UM PLEANÁIL AGUS FORBAIRT, 2000 (ARNA LEASÚ), AGUS FAOI ALT 213 DEN ACHT UM PLEANÁIL AGUS FORBAIRT, 2000 (ARNA LEASÚ), FAOI ALT 184 DEN ACHT RIALTAIS ÁITIÚIL, 2001, AGUS FAOI ALT 44 DEN ACHT UM ÚDARÁS IOMPAIR BHAILE ÁTHA CLIATH 2008 (ARNA LEASÚ).**

**FORM OF NOTICE OF A COMPULSORY PURCHASE ORDER UNDER SECTION 76 OF AND THE THIRD SCHEDULE TO THE HOUSING ACT 1966 AS EXTENDED BY SECTION 10 OF THE LOCAL GOVERNMENT (NO. 2) ACT 1960 TO BE PUBLISHED IN ACCORDANCE WITH ARTICLE 4(a) OF THE THIRD SCHEDULE TO THE HOUSING ACT, 1966, AS AMENDED BY THE PLANNING AND DEVELOPMENT ACT 2000 (AS AMENDED), AND UNDER SECTION 213 OF THE PLANNING AND DEVELOPMENT ACT, 2000 (AS AMENDED), SECTION 184 OF THE LOCAL GOVERNMENT ACT 2001 AND SECTION 44 OF THE DUBLIN TRANSPORT AUTHORITY ACT 2008 (AS AMENDED).**

**FÁIL ÉIGEANTACH TALÚN / COMPULSORY ACQUISITION OF LAND**

**"ORDÚ CEANNAIGH ÉIGEANTAIGH NA  
SCÉIME CROÍCHONAIR BUS**

**Ó THEACH MEALÓG/RÁTH FEARNÁIN GO LÁR NA CATHRACH, 2023"**

I bhfeidhmiú na gcumhachtaí a thugtar dó le halt 76 d'Acht na dTithe, 1966, agus leis an Tríú Sceideal a ghabhann leis, arna leathnú le halt 10 den Acht Rialtais Áitiúil (Uimh. 2), 1960, arna ionadú le halt 86 d'Acht na dTithe, 1966, arna leasú le halt 6 d'Acht na mBóithre, 1993, agus leis an Dara Sceideal a ghabhann leis, agus arna leasú leis an Acht um Pleanáil agus Forbairt, 2000 (arna leasú), le halt 184 den Acht Rialtais Áitiúil, 2001, agus le halt 44 den Acht um Údarás Iompair Bhaile Átha Cliath 2008 (arna leasú), rinne an tÚdarás Náisiúnta Iompair (dá ngairtear an "tÚdarás" anseo ina dhiaidh seo) ordú a bhfuil an teideal sin thuas air agus atá le tíolacadh don Bhord Pleanála lena dheimhniú.

Má dheimhnítear é, údarófar leis an ordú don Údarás an talamh agus/nó na cearta a thuairiscítear i gCuid I, i gCuid II agus i gCuid IV (Roinn A) den Sceideal a ghabhann leis seo a fháil go héigeantach chun an Scéim Croíchonair Bus ó Theach Mealóg/Ráth Fearnáin go Lár na Cathrach a thógáil chun an t-iompar poiblí a éascú, mar aon leis na hoibreacha coimhdeacha agus iarmhartacha uile a bhaineann leo sin. Tá an scéim thart ar 10 km ar fad san iomlán. Pointe tosaithe na scéime is ea Bóthar na Gráinsí/an R821 ag an acomhal le hAscaill an Gharráin Chnó, agus leanann sí ar aghaidh ansin feadh Bhóthar na Gráinsí/an R821, Bhóthar Ráth Fearnáin/an R115, Bhóthar Ráth Fearnáin/an R114, Bhóthar Thír an Iúir Thoir, Bhóthar Ráth Garbh, Bhóthar Ráth Maonais Íochtarach, Shráid Richmond Theas, Shráid Camden Uachtarach agus Íochtarach, Shráid Loch Garman, Chnoc Réamainn, Shráid Aungier agus Shráid Sheoirse Mhór Theas. Críochnaíonn sí ag Sráid an Dáma. Tá an Chroíchonair Bus ródaíthe freisin feadh Bhóthar Thamhlachta/an R137, ag tosú di lastoir de chómhalarú acomhal 11 den M50, agus tá sí ródaíthe tríd an R137 feadh Bhóthar Thamhlachta agus Bhóthar Theach Mealóg, trí Shráidbhaile Theach Mealóg, ag críochnú di ag Crosaire Thír an Iúir. De bhreis ar a bhfuil thuas, soláthraítear saoráidí malartacha rothaíochta feadh Bhóthar Chrois Araid/Bhóthar Thír an Iúir Thuaidh idir Crois Thír an Iúir agus Ascaill Radharc na Páirce, agus feadh Ascaill Pháirc na dTor, Pháirc Wasdale, Gharrán Wasdale, Bhóthar Shióin agus Bhóthar Orwell, a bhfuil gach ceann díobh lonnaithe i gContae Bhaile Átha Cliath agus laistigh de limistéir riaracháin Chomhairle Cathrach Bhaile Átha Cliath, Chomhairle

**"TEMPLEOGUE / RATHFARNHAM TO CITY CENTRE  
CORE BUS CORRIDOR SCHEME  
COMPULSORY PURCHASE ORDER 2023"**

The National Transport Authority (hereinafter referred to as the "NTA") in exercise of the powers conferred upon them by Section 76 of the Housing Act, 1966, and the Third Schedule thereto, as extended by Section 10 of the Local Government (No. 2) Act, 1960 as substituted by Section 86 of the Housing Act, 1966 as amended by Section 6 and the Second Schedule to the Roads Act, 1993 and as amended by the Planning and Development Act, 2000 (as amended), Section 184 of the Local Government Act 2001 and Section 44 of the Dublin Transport Authority Act 2008 (as amended), have made an order entitled as above which is about to be submitted to An Bord Pleanála for confirmation.

If confirmed, the order will authorise the NTA to acquire compulsorily the land and/or rights described in Part I, Part II and Part IV (Section A) of the Schedule hereto for the purposes of construction of the Templeogue / Rathfarnham to City Centre Core Bus Corridor Scheme for the purposes of facilitating public transport, and together with all ancillary and consequential works associated therewith. The scheme has an overall length of approximately 10km, and will commence on the R821 Grange Road at the junction with Nutgrove Avenue, then travel along the R821 Grange Road, the R115 Rathfarnham Road, the R114 Rathfarnham Road, Terenure Road East, Rathgar Road, Rathmines Road Lower, Richmond Street South, Camden Street Upper and Lower, Wexford Street, Redmond's Hill, Aungier Street, and South Great George's Street and terminates at Dame Street. The Core Bus Corridor is also routed along the R137 Tallaght Road, commencing east of the M50 junction 11 interchange and is routed via the R137 along Tallaght Road and Templeogue Road, through Templeogue Village, terminating at Terenure Cross. In addition to the above, alternative cycle facilities are provided along Harold's Cross Road / Terenure Road North between Terenure Cross and Parkview Avenue, as well as along Bushy Park Road, Wasdale Park, Wasdale Grove, Zion Road and Orwell Road, all in the County of Dublin and within the Dublin City Council (DCC), South Dublin County Council (SDCC) and Dún Laoghaire-Rathdown County Council (DLRCC) administrative areas.

Contae Bhaile Átha Cliath Theas agus Chomhairle Contae Dhún Laoghaire-Ráth an Dúin.

Tabharfar fógra aonair i scríbhinn d'úinéirí, léasaithe agus áititheoirí na talún agus/nó na gcearta a thuairiscítear i gCuid I, i gCuid II agus i gCuid IV den Sceideal.

Údarófar don Údarás leis an ordú na cearta slí poiblí a thuairiscítear i gCuid III (Roinn A) den Sceideal a ghabhann leis seo a mhúchadh trí ordú arna dhéanamh aige tar éis dó an talamh a fháil, i gcás go mbeidh na cearta slí poiblí thar an talamh arna fháil amhlaidh nó thar aon chuid den talamh sin, nó thar talamh atá tadhlaigh leis an talamh sin arna fháil amhlaidh nó le haon chuid den talamh sin nó a bhaineann leis an gcéanna.

Údarófar don Údarás leis an ordú na cearta slí poiblí a thuairiscítear i gCuid III (Roinn B) den Sceideal a shrianadh, nó cur isteach orthu ar shlí eile.

Údarófar don Údarás leis an ordú na cearta príobháideacha a thuairiscítear i gCuid IV (Roinn B) den Sceideal a shrianadh, nó cur isteach orthu ar shlí eile.

Údarófar don Údarás leis an ordú na cearta príobháideacha a thuairiscítear i gCuid IV (Roinn C) den Sceideal a shrianadh, nó cur isteach orthu ar shlí eile, go sealadach.

Ba cheart agóid i gcoinne an ordaithe a dhéanamh i scríbhinn chuig **An Bord Pleanála (An Rannóg um Fhorbairt Bonneagair Straitéisigh), 64 Sráid Maoilbhríde, Baile Átha Cliath 1, D01 V902**, chun go sroichfidh sí an Bord sin roimh **5.30pm Dé Máirt an 20 Meitheamh 2023**.

Ní fhéadfaidh an Bord:-

- ordú ceannaigh éigeantaigh i ndáil leis an talamh a dheimhniú más rud é go ndéanann úinéir, léasaí nó áititheoir na talún agóid i ndáil leis an bhfáil is agóid nach dtarraingítear siar;
- ordú lena n-údaraitear ceart slí poiblí a mhúchadh nó a shrianadh, nó cur isteach air ar shlí eile, a dheimhniú más ann d'agóid i gcoinne an cearta slí poiblí a mhúchadh nó a shrianadh, nó i gcoinne cur isteach air, is agóid nach dtarraingítear siar;
- ordú lena n-údaraitear ceart príobháideach a fháil nó a shrianadh, nó cur isteach air, a dheimhniú más ann d'agóid ó úinéir, léasaí nó áititheoir an chirt phríobháidigh i gcoinne an cearta príobháideach a fháil nó a shrianadh, nó i gcoinne cur isteach air, is agóid nach dtarraingítear siar,

go dtí go mbeidh an agóid/na hagóidí breithnithe aige.

Tá lánrogha ag an mBord Pleanála faoi alt 218 den Acht um Pleanáil agus Forbairt, 2000 (arna leasú), chun éisteacht ó bhéal a sheoladh.

Roimh dó a chinneadh a dhéanamh i dtaobh an tOrdú Ceannaigh Éigeantaigh a dheimhniú nó gan é a dheimhniú, ní foláir don Bhord breithniú a dhéanamh ar aon agóid a dhéantar agus nach dtarraingítear siar, ar aon aighneachtaí nó tuairimí breise a dhéantar de bhun iarraidh ón mBord faoi alt 217A den Acht um Pleanáil agus Forbairt, 2000 (arna leasú), agus ar aon tuarascáil ón duine a sheol an éisteacht ó bhéal, i gcás go seolfar éisteacht ó bhéal den sórt sin.

Más cuí leis, féadfaidh an Bord an fháil éigeantach nó aon chuid di a dheimhniú, fara nó d'éagmais coinníollacha nó modhnuithe, nó an fháil éigeantach nó aon chuid di a neamhniú.

Owners, lessees and occupiers of the land and/or rights described in Part I, Part II and Part IV of the Schedule will receive individual written notice.

The order will authorise the NTA to extinguish the public rights described in Part III (Section A) of the Schedule hereto, by order made by it after it has acquired the land, where the said public rights are over the land so acquired or any part thereof, or over land adjacent to or associated with the land so acquired or any part thereof.

The order will authorise the NTA to restrict or otherwise interfere with the public rights described in Part III (Section B) of the Schedule.

The order will authorise the NTA to restrict or otherwise interfere with the private rights described in Part IV (Section B) of the Schedule.

The order will authorise the NTA to temporarily restrict or otherwise interfere with the private rights described in Part IV (Section C) of the Schedule.

Any objection to the order should be made in writing to **An Bord Pleanála (Strategic Infrastructure Division), 64 Marlborough Street, Dublin 1, D01 V902**, so as to reach the said Board before **5.30pm Tuesday 20<sup>th</sup> June 2023**.

The Board cannot confirm:-

- a compulsory purchase order in respect of the land if an objection is made in respect of the acquisition by an owner, lessee or occupier of the land, and not withdrawn;
- an order which authorises the extinguishment, restriction or interference with a public right of way if there is an objection to the extinguishment, restriction or interference with a public right of way which is not withdrawn;
- an order which authorises the acquisition, restriction or interference with a private right if there is an objection to the acquisition, restriction or interference with the private right by an owner, lessee or occupier of the private right which is not withdrawn,

until it has considered the objection(s).

An Bord Pleanála has an absolute discretion under Section 218 of the Planning and Development Act 2000 (as amended) to hold an oral hearing.

Before making its decision on an application to confirm the Compulsory Purchase Order, the Board must consider any objection made and not withdrawn, any additional submissions or observations made pursuant to a request by the Board under Section 217A of the Planning and Development Act 2000 (as amended) and any report of the person who held the oral hearing, if such an oral hearing takes place.

The Board, if it thinks fit, may confirm the compulsory acquisition or any part thereof, with or without conditions or modifications, or to annul the compulsory acquisition or any part thereof.

Maidir le Tuarascáil ar Mheasúnacht Tionchair Timpeallachta, agus Ráiteas Tionchair Natura, ar tugadh fógra poiblí leithleach ina thaobh, ullmháíodh iad i ndáil leis an bhforbairt a bheartaítear a dhéanamh ar an talamh. Fianaise (i) maidir leis na héifeachtaí is dóigh a bheidh ag an bhforbairt bheartaithe ar an gcomhshaol, (ii) maidir le himpleacht na forbartha bheartaithe do phleanáil chuí agus forbairt inchothaithe sa limistéar ina mbeartaítear an fhorbairt bheartaithe a shuíomh, agus (iii) maidir leis na héifeachtaí suntasacha is dóigh a bheidh ag an bhforbairt bheartaithe ar Láithreáin Eorpacha, féadfar í a éisteacht ag aon éisteacht ó bhéal a d'fhéadfaí a sheoladh.

An Environmental Impact Assessment Report, and a Natura Impact Statement, for which separate public notice has been given, have been prepared in respect of the development which it is proposed to carry out on the land. Evidence in relation to (i) the likely effects on the environment of the proposed development, (ii) the implication of the proposed development for proper planning and sustainable development in the area in which it is proposed to situate the proposed development and (iii) the likely significant effects of the proposed development on European Sites may be heard at any oral hearing, that may be held.

Féadfar cóip den ordú agus de na léarscáileanna dá dtagraítear ann a fheiceáil ón Máirt an 25 Aibreán go dtí an Mháirt an 20 Meitheamh 2023 ag:

A copy of the order and of the maps referred to in it may be seen from Tuesday 25<sup>th</sup> April to Tuesday 20<sup>th</sup> June 2023 at:

**An tÚdarás Náisiúnta Iompair**  
**Dún Scéine**  
**Lána Fhearchair**  
**Baile Átha Cliath 2**  
**D02 WT20**  
**Uaireanta oscailte**  
**Luan go hAoine**  
**9:15 go 16:00**

**An Bord Pleanála,**  
**64 Sráid Maoilbhríde,**  
**Baile Átha Cliath 1,**  
**D01 V902**  
**Uaireanta oscailte**  
**Luan go hAoine**  
**9:15 go 17:30**

**National Transport Authority**  
**Dún Scéine**  
**Harcourt Lane**  
**Dublin 2**  
**D02 WT20**  
**Opening Hours**  
**Monday to Friday**  
**9:15 to 16:00**

**An Bord Pleanála,**  
**64 Marlborough Street,**  
**Dublin 1,**  
**D01 V902**  
**Opening Hours**  
**Monday to Friday**  
**9:15 to 17:30**

Tá cóip den ordú agus de na léarscáileanna dá dtagraítear ann ar fáil freisin ar an suíomh Gréasáin de chuid an Údarás Náisiúnta Iompair don Scéim Croichonair Bus ó Theach Mealóg / Ráth Fearnáin go Lár na Cathrach ag: [www.templeoguerathfarnhamscheme.ie](http://www.templeoguerathfarnhamscheme.ie).

A copy of the order and of the maps referred to in it are also available on the National Transport Authority website for the Templeogue / Rathfarnham to City Centre Core Bus Corridor Scheme at: [www.templeoguerathfarnhamscheme.ie](http://www.templeoguerathfarnhamscheme.ie).

Arna dhátú an 20ú lá seo d'Aibreán 2023.

Dated this 20<sup>th</sup> April 2023.

Aidan Gallagher

Aidan Gallagher

Ceann Bhonneagar BusConnects Bhaile Átha Cliath  
 An tÚdarás Náisiúnta Iompair

Head of Bus Connects Dublin Infrastructure  
 National Transport Authority

**SCEIDEAL / SCHEDULE**  
**CUID I / PART I**

**Tailte atá á bhFáil go Buan / Lands Being Permanently Acquired**

Talamh seachas talamh arb é atá ann teach nó tithe atá neamhoiriúnach chun daoine cónaí ann nó iontu agus nach féidir ar chostas réasúnach é nó iad a dhéanamh oiriúnach chun daoine cónaí ann nó iontu / Land other than land consisting of a house or houses unfit for human habitation and not capable of being rendered fit for human habitation at reasonable expense

Chun mionsonraí a fháil faoi Úinéirí nó Úinéirí Ainme, faoi Léasaithe nó Léasaithe Ainme nó faoi Aititheoirí, féach Ordú Ceannaigh Éigeantaigh na Scéime Croichonair Bus ó Theach Mealóg/Ráth Fearnáin go Lár na Cathrach, 2023, ag [www.templeoguerathfarnhamscheme.ie](http://www.templeoguerathfarnhamscheme.ie) / For details of the Owners or Reputed Owners/Lesseees or Reputed Lesseees/Occupiers please see the Templeogue / Rathfarnham to City Centre Core Bus Corridor Scheme Compulsory Purchase Order 2023 at [www.templeoguerathfarnhamscheme.ie](http://www.templeoguerathfarnhamscheme.ie).

Uimhir ar an léarscáil a taisceadh ag an Údarás Number on map deposited at NTA	Méid, tuairisc agus suíomh na talún Quantity, description and situation of land	Uimhir ar an léarscáil a taisceadh ag an Údarás Number on map deposited at NTA	Méid, tuairisc agus suíomh na talún Quantity, description and situation of land
1001(1).1f	Achar (Area) (Ha): 0.13831 Achar (Area) (m2): 1383.1 Tuairisc (Description): Áineas (Recreational) Contae (County): Baile Átha Cliath (Dublin) Seoladh (Address): Rathfarnham Castle, Grange Road, Rathfarnham, Dublin 14	1002(1).1f	Achar (Area) (Ha): 0.00384 Achar (Area) (m2): 38.4 Tuairisc (Description): Áineas (Recreational) Contae (County): Baile Átha Cliath (Dublin) Seoladh (Address): Rathfarnham Castle, Grange Road, Rathfarnham, Dublin 14

## SCEIDEAL / SCHEDULE

## CUID I / PART I

## Tailte atá á bhFáil go Buan / Lands Being Permanently Acquired

Talamh seachas talamh arb é atá ann teach nó tithe atá neamhoiriúnach chun daoine cónaí ann nó iontu agus nach féidir ar chostas réasúnach é nó iad a dhéanamh oiriúnach chun daoine cónaí ann nó iontu / Land other than land consisting of a house or houses unfit for human habitation and not capable of being rendered fit for human habitation at reasonable expense.

Chun mionsonraí a fháil faoi Úinéirí nó Úinéirí Ainme, faoi Léasaithe nó Léasaithe Ainme nó faoi Áititheoirí, féach Ordú Ceannaigh Éigeantaigh na Scéime Croíchonair Bus ó Theach Mealóg/Ráth Fearnáin go Lár na Cathrach, 2023, ag [www.templeoguerathfarnhamscheme.ie/](http://www.templeoguerathfarnhamscheme.ie/) For details of the Owners or Reputed Owners/Lesseees or Reputed Lesseees/Occupiers please see the Templeogue / Rathfarnham to City Centre Core Bus Corridor Scheme Compulsory Purchase Order 2023 at [www.templeoguerathfarnhamscheme.ie.](http://www.templeoguerathfarnhamscheme.ie/)

Uimhir ar an léarscáil a taisceadh ag an Údarás Number on map deposited at NTA	Méid, tuairisc agus suíomh na talún Quantity, description and situation of land	Uimhir ar an léarscáil a taisceadh ag an Údarás Number on map deposited at NTA	Méid, tuairisc agus suíomh na talún Quantity, description and situation of land
1003(1).1e	Achar (Area) (Ha): 0.00278 Achar (Area) (m2): 27.8 Tuairisc (Description): Tuirlingtí Príobháideacha (Private Landings) Contae (County): Baile Átha Cliath (Dublin) Seoladh (Address): Public Area at junction of Main Street & Rathfarnham Road, Rathfarnham, Dublin 14	1013(1).1d	Achar (Area) (Ha): 0.00028 Achar (Area) (m2): 2.8 Tuairisc (Description): Garraí Tí (House Garden) Contae (County): Baile Átha Cliath (Dublin) Seoladh (Address): 143 Rathfarnham Road, Dublin 14, D14 YC56
1005(1).1f	Achar (Area) (Ha): 0.01143 Achar (Area) (m2): 114.3 Tuairisc (Description): Áineas (Recreational) Contae (County): Baile Átha Cliath (Dublin) Seoladh (Address): Rathfarnham Castle Car Park Roadway, Rathfarnham, Dublin 14	1014(1).1d	Achar (Area) (Ha): 0.00014 Achar (Area) (m2): 1.4 Tuairisc (Description): Garraí Tí (House Garden) Contae (County): Baile Átha Cliath (Dublin) Seoladh (Address): 141 Rathfarnham Road, Dublin 14, D14 KN28
1007(1).1c	Achar (Area) (Ha): 0.00086 Achar (Area) (m2): 8.6 Tuairisc (Description): Tráchtáil (Commercial) Contae (County): Baile Átha Cliath (Dublin) Seoladh (Address): Rathfarnham Service Station, Rathfarnham Road, Dublin 14, D14 V2P4	1015(1).1h	Achar (Area) (Ha): 0.00235 Achar (Area) (m2): 23.5 Tuairisc (Description): Criosaithe (Zoned) Contae (County): Baile Átha Cliath (Dublin) Seoladh (Address): Green area at entrance to Rathfarnham Wood, Dublin 14
1008(1).1d	Achar (Area) (Ha): 0.00051 Achar (Area) (m2): 5.1 Tuairisc (Description): Garraí Tí (House Garden) Contae (County): Baile Átha Cliath (Dublin) Seoladh (Address): Adelaide, 153 Rathfarnham Road, Dublin 14, D14 F439	1015(3).1h	Achar (Area) (Ha): 0.00137 Achar (Area) (m2): 13.7 Tuairisc (Description): Criosaithe (Zoned) Contae (County): Baile Átha Cliath (Dublin) Seoladh (Address): Green area at entrance to Rathfarnham Wood, Dublin 14
1009(1).1c	Achar (Area) (Ha): 0.00048 Achar (Area) (m2): 4.8 Tuairisc (Description): Tráchtáil (Commercial) Contae (County): Baile Átha Cliath (Dublin) Seoladh (Address): 151 Rathfarnham Road, Dublin 14, D14 Y8W3	1016(1).1d	Achar (Area) (Ha): 0.00022 Achar (Area) (m2): 2.2 Tuairisc (Description): Garraí Tí (House Garden) Contae (County): Baile Átha Cliath (Dublin) Seoladh (Address): 8 Rathfarnham Wood, Dublin 14, D14 C1W3
1010(1).1d	Achar (Area) (Ha): 0.00046 Achar (Area) (m2): 4.6 Tuairisc (Description): Garraí Tí (House Garden) Contae (County): Baile Átha Cliath (Dublin) Seoladh (Address): 149 Rathfarnham Road, Dublin 14, D14 PX38	1017(1).1d	Achar (Area) (Ha): 0.00116 Achar (Area) (m2): 11.6 Tuairisc (Description): Garraí Tí (House Garden) Contae (County): Baile Átha Cliath (Dublin) Seoladh (Address): 9 Rathfarnham Wood, Dublin 14, D14 Y0H2
1011(1).1c	Achar (Area) (Ha): 0.00046 Achar (Area) (m2): 4.6 Tuairisc (Description): Tráchtáil (Commercial) Contae (County): Baile Átha Cliath (Dublin) Seoladh (Address): 147 Rathfarnham Road, Dublin 14, D14 K6N6	1018(1).1d	Achar (Area) (Ha): 0.00270 Achar (Area) (m2): 27.0 Tuairisc (Description): Garraí Tí (House Garden) Contae (County): Baile Átha Cliath (Dublin) Seoladh (Address): 10 Rathfarnham Wood, Dublin 14, D14 T2P5
1012(1).1d	Achar (Area) (Ha): 0.00038 Achar (Area) (m2): 3.8 Tuairisc (Description): Garraí Tí (House Garden) Contae (County): Baile Átha Cliath (Dublin) Seoladh (Address): 145 Rathfarnham Road, Dublin 14, D14 F384	1019(1).1d	Achar (Area) (Ha): 0.00387 Achar (Area) (m2): 38.7 Tuairisc (Description): Garraí Tí (House Garden) Contae (County): Baile Átha Cliath (Dublin) Seoladh (Address): 11 Rathfarnham Wood, Dublin 14, D14 X5X4



## SCEIDEAL / SCHEDULE

## CUID I / PART I

## Tailte atá á bhFáil go Buan / Lands Being Permanently Acquired

Talamh seachas talamh arb é atá ann teach nó tithe atá neamhoiriúnach chun daoine cónaí ann nó iontu agus nach féidir ar chostas réasúnach é nó iad a dhéanamh oiriúnach chun daoine cónaí ann nó iontu / Land other than land consisting of a house or houses unfit for human habitation and not capable of being rendered fit for human habitation at reasonable expense

Chun mionsonraí a fháil faoi Úinéirí nó Úinéirí Ainme, faoi Léasaithe nó Léasaithe Ainme nó faoi Áititheoirí, féach Ordú Ceannaigh Éigeantaigh na Scéime Croíchonair Bus ó Theach Mealóg/Ráth Fearnáin go Lár na Cathrach, 2023, ag [www.templeogueathfarnhamscheme.ie/](http://www.templeogueathfarnhamscheme.ie/) For details of the Owners or Reputed Owners/Lesseees or Reputed Lesseees/Occupiers please see the Templeogue / Rathfarnham to City Centre Core Bus Corridor Scheme Compulsory Purchase Order 2023 at [www.templeogueathfarnhamscheme.ie.](http://www.templeogueathfarnhamscheme.ie/)

Uimhir ar an léarscáil a taisceadh ag an Údarás Number on map deposited at NTA	Méid, tuairisc agus suíomh na talún Quantity, description and situation of land	Uimhir ar an léarscáil a taisceadh ag an Údarás Number on map deposited at NTA	Méid, tuairisc agus suíomh na talún Quantity, description and situation of land
1020(1).1d	Achar (Area) (Ha): 0.00577 Achar (Area) (m2): 57.7 Tuairisc (Description): Garraí Tí (House Garden) Contae (County): Baile Átha Cliath (Dublin) Seoladh (Address): 12 Rathfarnham Wood, Dublin 14, D14 E4Y1	1027(1).1d	Achar (Area) (Ha): 0.00122 Achar (Area) (m2): 12.2 Tuairisc (Description): Garraí Tí (House Garden) Contae (County): Baile Átha Cliath (Dublin) Seoladh (Address): Trevi, 53 Rathfarnham Road, Dublin 6W, D6W T027
1021(1).1h	Achar (Area) (Ha): 0.18040 Achar (Area) (m2): 1804.0 Tuairisc (Description): Criosaithe (Zoned) Contae (County): Baile Átha Cliath (Dublin) Seoladh (Address): Public car park adjacent to Rathfarnham Wood, Dublin 14	1028(1).1d	Achar (Area) (Ha): 0.00012 Achar (Area) (m2): 1.2 Tuairisc (Description): Garraí Tí (House Garden) Contae (County): Baile Átha Cliath (Dublin) Seoladh (Address): Ardandra, 51 Rathfarnham Road, Dublin 6W, D6W N970
1021(2).1f	Achar (Area) (Ha): 0.02919 Achar (Area) (m2): 291.9 Tuairisc (Description): Áineas (Recreational) Contae (County): Baile Átha Cliath (Dublin) Seoladh (Address): Green Area at Rossmore Crescent, Templeogue Road, Dublin 6W	1029(1).1d	Achar (Area) (Ha): 0.00284 Achar (Area) (m2): 28.4 Tuairisc (Description): Garraí Tí (House Garden) Contae (County): Baile Átha Cliath (Dublin) Seoladh (Address): 50 Rathfarnham Road, Dublin 6W, D6W PF88
1022(1).1h	Achar (Area) (Ha): 0.05657 Achar (Area) (m2): 565.7 Tuairisc (Description): Criosaithe (Zoned) Contae (County): Baile Átha Cliath (Dublin) Seoladh (Address): Green Area at junction of Grange Road & Nutgrove Avenue, Rathfarnham, Dublin 14	1030(1).1d	Achar (Area) (Ha): 0.00256 Achar (Area) (m2): 25.6 Tuairisc (Description): Garraí Tí (House Garden) Contae (County): Baile Átha Cliath (Dublin) Seoladh (Address): 48 Rathfarnham Road, Dublin 6W, D6W VY84
1023(1).1h	Achar (Area) (Ha): 0.00046 Achar (Area) (m2): 4.6 Tuairisc (Description): Criosaithe (Zoned) Contae (County): Baile Átha Cliath (Dublin) Seoladh (Address): Green area at entrance to Rathfarnham Wood, Dublin 14	1031(1).1d	Achar (Area) (Ha): 0.00326 Achar (Area) (m2): 32.6 Tuairisc (Description): Garraí Tí (House Garden) Contae (County): Baile Átha Cliath (Dublin) Seoladh (Address): 46 Rathfarnham Road, Dublin 6W, D6W F348
1024(1).1d	Achar (Area) (Ha): 0.00236 Achar (Area) (m2): 23.6 Tuairisc (Description): Garraí Tí (House Garden) Contae (County): Baile Átha Cliath (Dublin) Seoladh (Address): 59 Rathfarnham Road, Dublin 6, D6W AK70	1032(1).1d	Achar (Area) (Ha): 0.00360 Achar (Area) (m2): 36.0 Tuairisc (Description): Garraí Tí (House Garden) Contae (County): Baile Átha Cliath (Dublin) Seoladh (Address): 44 Rathfarnham Road, Dublin 6W, D6W PX79
1025(1).1d	Achar (Area) (Ha): 0.00170 Achar (Area) (m2): 17.0 Tuairisc (Description): Garraí Tí (House Garden) Contae (County): Baile Átha Cliath (Dublin) Seoladh (Address): 57 Rathfarnham Road, Terenure, Dublin 6W, D6W HY28	1033(1).1d	Achar (Area) (Ha): 0.00389 Achar (Area) (m2): 38.9 Tuairisc (Description): Garraí Tí (House Garden) Contae (County): Baile Átha Cliath (Dublin) Seoladh (Address): Little Sisters Of The Assumption Convent, 42 Rathfarnham Road, Dublin 6W, D6W NY67
1026(1).1d	Achar (Area) (Ha): 0.00130 Achar (Area) (m2): 13.0 Tuairisc (Description): Garraí Tí (House Garden) Contae (County): Baile Átha Cliath (Dublin) Seoladh (Address): 55 Rathfarnham Road, Dublin 6W, D6W X314	1034(1).1d	Achar (Area) (Ha): 0.00296 Achar (Area) (m2): 29.6 Tuairisc (Description): Garraí Tí (House Garden) Contae (County): Baile Átha Cliath (Dublin) Seoladh (Address): Laneway off Rathfarnham Road, Terenure, Dublin 6W

**SCEIDEAL / SCHEDULE  
CUID I / PART I**

**Tailte atá á bhFáil go Buan / Lands Being Permanently Acquired**

Talamh seachas talamh arb é atá ann teach nó tithe atá neamhoiriúnach chun daoine cónaí ann nó iontu agus nach féidir ar chostas réasúnach é nó iad a dhéanamh oiriúnach chun daoine cónaí ann nó iontu / Land other than land consisting of a house or houses unfit for human habitation and not capable of being rendered fit for human habitation at reasonable expense

Chun mionsonraí a fháil faoi Úinéirí nó Úinéirí Ainme, faoi Léasaithe nó Léasaithe Ainme nó faoi Áititheoirí, féach Ordú Ceannaigh Éigeantaigh na Scéime Croichonair Bus ó Theach Mealóg/Ráth Fearnáin go Lár na Cathrach, 2023, ag [www.templeogueathfarnhamscheme.ie/](http://www.templeogueathfarnhamscheme.ie/) For details of the Owners or Reputed Owners/Lessees or Reputed Lessees/Occupiers please see the Templeogue / Rathfarnham to City Centre Core Bus Corridor Scheme Compulsory Purchase Order 2023 at [www.templeogueathfarnhamscheme.ie/](http://www.templeogueathfarnhamscheme.ie/).

Uimhir ar an léarscáil a taisceadh ag an Údarás Number on map deposited at NTA	Méid, tuairisc agus suíomh na talún Quantity, description and situation of land
1035(1).1d	Achar (Area) (Ha): 0.00343 Achar (Area) (m2): 34.3 Tuairisc (Description): Contae (County): Seoladh (Address): Garraí Tí (House Garden) Baile Átha Cliath (Dublin) 40 Rathfarnham Road, Dublin 6W, D6W A037
1036(1).1d	Achar (Area) (Ha): 0.00264 Achar (Area) (m2): 26.4 Tuairisc (Description): Contae (County): Seoladh (Address): Garraí Tí (House Garden) Baile Átha Cliath (Dublin) 38 Rathfarnham Road, Dublin 6W, D6W AW74
1037(1).1d	Achar (Area) (Ha): 0.00201 Achar (Area) (m2): 20.1 Tuairisc (Description): Contae (County): Seoladh (Address): Garraí Tí (House Garden) Baile Átha Cliath (Dublin) 36 Rathfarnham Road, Dublin 6W, D6W W302
1038(1).1d	Achar (Area) (Ha): 0.00164 Achar (Area) (m2): 16.4 Tuairisc (Description): Contae (County): Seoladh (Address): Garraí Tí (House Garden) Baile Átha Cliath (Dublin) 34 Rathfarnham Road, Dublin 6W, D6W A250
1039(1).1i	Achar (Area) (Ha): 0.00284 Achar (Area) (m2): 28.4 Tuairisc (Description): Contae (County): Seoladh (Address): Pobal (Community) Baile Átha Cliath (Dublin) Terenure Synagogue, 32A Rathfarnham Road, Dublin 6W, D6W VE89
1040(1).1d	Achar (Area) (Ha): 0.00457 Achar (Area) (m2): 45.7 Tuairisc (Description): Contae (County): Seoladh (Address): Garraí Tí (House Garden) Baile Átha Cliath (Dublin) Earls Court, 80 Terenure Road East, Dublin 6
1041(1).1d	Achar (Area) (Ha): 0.00738 Achar (Area) (m2): 73.8 Tuairisc (Description): Contae (County): Seoladh (Address): Garraí Tí (House Garden) Baile Átha Cliath (Dublin) Rockview, 78 Terenure Road East, Dublin 6, D06 X785
1042(1).1d	Achar (Area) (Ha): 0.00309 Achar (Area) (m2): 30.9 Tuairisc (Description): Contae (County): Seoladh (Address): Garraí Tí (House Garden) Baile Átha Cliath (Dublin) Annsley Lodge, 76A Terenure Road East, Terenure, Dublin 6

Uimhir ar an léarscáil a taisceadh ag an Údarás Number on map deposited at NTA	Méid, tuairisc agus suíomh na talún Quantity, description and situation of land
1043(1).1d	Achar (Area) (Ha): 0.00424 Achar (Area) (m2): 42.4 Tuairisc (Description): Contae (County): Seoladh (Address): Garraí Tí (House Garden) Baile Átha Cliath (Dublin) Cara House, 76 Terenure Road East, Dublin 6, D06 WT28
1044(1).1c	Achar (Area) (Ha): 0.00432 Achar (Area) (m2): 43.2 Tuairisc (Description): Contae (County): Seoladh (Address): Tráchtáil (Commercial) Baile Átha Cliath (Dublin) 74 & 74a Terenure Road East, Terenure, Dublin 6
1045(1).1d	Achar (Area) (Ha): 0.00032 Achar (Area) (m2): 3.2 Tuairisc (Description): Contae (County): Seoladh (Address): Garraí Tí (House Garden) Baile Átha Cliath (Dublin) 9 Town Houses, Terenure Road East, Dublin 6, D06 DY89
1046(1).1d	Achar (Area) (Ha): 0.00130 Achar (Area) (m2): 13.0 Tuairisc (Description): Contae (County): Seoladh (Address): Garraí Tí (House Garden) Baile Átha Cliath (Dublin) 8 Town Houses, Terenure Road East, Dublin 6, D06 P3Y2
1047(1).1d	Achar (Area) (Ha): 0.00193 Achar (Area) (m2): 19.3 Tuairisc (Description): Contae (County): Seoladh (Address): Garraí Tí (House Garden) Baile Átha Cliath (Dublin) 7 Town Houses, Terenure Road East, Dublin 6, D06 A3T9
1048(1).1d	Achar (Area) (Ha): 0.00173 Achar (Area) (m2): 17.3 Tuairisc (Description): Contae (County): Seoladh (Address): Garraí Tí (House Garden) Baile Átha Cliath (Dublin) 6 Town Houses, Terenure Road East, Dublin 6, D06 F7V2
1049(1).1d	Achar (Area) (Ha): 0.00164 Achar (Area) (m2): 16.4 Tuairisc (Description): Contae (County): Seoladh (Address): Garraí Tí (House Garden) Baile Átha Cliath (Dublin) 5 Town Houses, Terenure Road East, Dublin 6, D06 N9W4

**SCEIDEAL / SCHEDULE  
CUID I / PART I**

**Tailte atá á bhFáil go Buan / Lands Being Permanently Acquired**

Talamh seachas talamh arb é atá ann teach nó tithe atá neamhoiriúnach chun daoine cónaí ann nó iontu agus nach féidir ar chostas réasúnach é nó iad a dhéanamh oiriúnach chun daoine cónaí ann nó iontu / Land other than land consisting of a house or houses unfit for human habitation and not capable of being rendered fit for human habitation at reasonable expense

Chun mionsonraí a fháil faoi Úinéirí nó Úinéirí Ainme, faoi Léasaithe nó Léasaithe Ainme nó faoi Áititheoirí, féach Ordú Ceannaigh Éigeantaigh na Scéime Croíchonair Bus ó Theach Mealóg/Ráth Fearnáin go Lár na Cathrach, 2023, ag [www.templeogueathfarnhamscheme.ie](http://www.templeogueathfarnhamscheme.ie) / For details of the Owners or Reputed Owners/Lessees or Reputed Lessees/Occupiers please see the Templeogue / Rathfarnham to City Centre Core Bus Corridor Scheme Compulsory Purchase Order 2023 at [www.templeogueathfarnhamscheme.ie](http://www.templeogueathfarnhamscheme.ie).

Uimhir ar an léarscáil a taisceadh ag an Údarás Number on map deposited at NTA	Méid, tuairisc agus suíomh na talún Quantity, description and situation of land
1050(1).1d	Achar (Area) (Ha): 0.00165 Achar (Area) (m2): 16.5 Tuairisc (Description): Garraí Tí (House Garden) Contae (County): Baile Átha Cliath (Dublin) Seoladh (Address): 4 Town Houses, Terenure Road East, Dublin 6, D06 W2A0
1051(1).1d	Achar (Area) (Ha): 0.00160 Achar (Area) (m2): 16.0 Tuairisc (Description): Garraí Tí (House Garden) Contae (County): Baile Átha Cliath (Dublin) Seoladh (Address): 3 Town Houses, Terenure Road East, Dublin 6, D06 Y4A7
1052(1).1d	Achar (Area) (Ha): 0.00194 Achar (Area) (m2): 19.4 Tuairisc (Description): Garraí Tí (House Garden) Contae (County): Baile Átha Cliath (Dublin) Seoladh (Address): 2 Town Houses, Terenure Road East, Dublin 6, D06 N2V0
1053(1).1d	Achar (Area) (Ha): 0.00237 Achar (Area) (m2): 23.7 Tuairisc (Description): Garraí Tí (House Garden) Contae (County): Baile Átha Cliath (Dublin) Seoladh (Address): 1 Town Houses, Terenure Road East, Dublin 6, D06 A2Y9
1054(1).1d	Achar (Area) (Ha): 0.00395 Achar (Area) (m2): 39.5 Tuairisc (Description): Garraí Tí (House Garden) Contae (County): Baile Átha Cliath (Dublin) Seoladh (Address): 69 Terenure Road East, Dublin 6, D06 P6C6
1055(1).1e	Achar (Area) (Ha): 0.00144 Achar (Area) (m2): 14.4 Tuairisc (Description): Tuirlingtí Príobháideacha (Private Landings) Contae (County): Baile Átha Cliath (Dublin) Seoladh (Address): Terenure Enterprise Centre, 17 Rathfarnham Road, Dublin 6W
1056(1).1e	Achar (Area) (Ha): 0.00009 Achar (Area) (m2): 0.9 Tuairisc (Description): Tuirlingtí Príobháideacha (Private Landings) Contae (County): Baile Átha Cliath (Dublin) Seoladh (Address): Eaton Hall, Terenure Road North, Dublin 6W
1057(1).1d	Achar (Area) (Ha): 0.00033 Achar (Area) (m2): 3.3 Tuairisc (Description): Garraí Tí (House Garden) Contae (County): Baile Átha Cliath (Dublin) Seoladh (Address): Hildon House, 62 Terenure Road East, Dublin 6

Uimhir ar an léarscáil a taisceadh ag an Údarás Number on map deposited at NTA	Méid, tuairisc agus suíomh na talún Quantity, description and situation of land
1058(1).1d	Achar (Area) (Ha): 0.00756 Achar (Area) (m2): 75.6 Tuairisc (Description): Garraí Tí (House Garden) Contae (County): Baile Átha Cliath (Dublin) Seoladh (Address): Beaumont House, 60 Terenure Road East, Dublin 6
1059(1).1d	Achar (Area) (Ha): 0.00108 Achar (Area) (m2): 10.8 Tuairisc (Description): Garraí Tí (House Garden) Contae (County): Baile Átha Cliath (Dublin) Seoladh (Address): Brookline, 58 Terenure Road East, Dublin 6
1060(1).1d	Achar (Area) (Ha): 0.00059 Achar (Area) (m2): 5.9 Tuairisc (Description): Garraí Tí (House Garden) Contae (County): Baile Átha Cliath (Dublin) Seoladh (Address): 56 Terenure Road East, Dublin 6
1061(1).1d	Achar (Area) (Ha): 0.00079 Achar (Area) (m2): 7.9 Tuairisc (Description): Garraí Tí (House Garden) Contae (County): Baile Átha Cliath (Dublin) Seoladh (Address): Triest House, 54 Terenure Road East, Dublin 6
1062(1).1d	Achar (Area) (Ha): 0.00408 Achar (Area) (m2): 40.8 Tuairisc (Description): Garraí Tí (House Garden) Contae (County): Baile Átha Cliath (Dublin) Seoladh (Address): 67 Terenure Road East, Dublin 6, D06 HP60
1063(1).1d	Achar (Area) (Ha): 0.00350 Achar (Area) (m2): 35.0 Tuairisc (Description): Garraí Tí (House Garden) Contae (County): Baile Átha Cliath (Dublin) Seoladh (Address): 65 Terenure Road East, Dublin 6, D06 T2R0
1064(1).1d	Achar (Area) (Ha): 0.00380 Achar (Area) (m2): 38.0 Tuairisc (Description): Garraí Tí (House Garden) Contae (County): Baile Átha Cliath (Dublin) Seoladh (Address): Roslin, 63 Terenure Road East, Dublin 6, D06 EW73
1065(1).1d	Achar (Area) (Ha): 0.00333 Achar (Area) (m2): 33.3 Tuairisc (Description): Garraí Tí (House Garden) Contae (County): Baile Átha Cliath (Dublin) Seoladh (Address): Glenarm, 61 Terenure Road East, Dublin 6, D06 KD30

## SCEIDEAL / SCHEDULE

## CUID I / PART I

## Tailte atá á bhFáil go Buan / Lands Being Permanently Acquired

Talamh seachas talamh arb é atá ann teach nó tithe atá neamhoiriúnach chun daoine cónaí ann nó iontu agus nach féidir ar chostas réasúnach é nó iad a dhéanamh oiriúnach chun daoine cónaí ann nó iontu / Land other than land consisting of a house or houses unfit for human habitation and not capable of being rendered fit for human habitation at reasonable expense

Chun mionsonraí a fháil faoi Úinéirí nó Úinéirí Ainme, faoi Léasaithe nó Léasaithe Ainme nó faoi Áititheoirí, féach Ordú Ceannaigh Éigeantaigh na Scéime Croíchonair Bus ó Theach Mealóg/Ráth Fearnáin go Lár na Cathrach, 2023, ag [www.templeoguerathfarnhamscheme.ie/](http://www.templeoguerathfarnhamscheme.ie/) For details of the Owners or Reputed Owners/Lessees or Reputed Lessees/Occupiers please see the Templeogue / Rathfarnham to City Centre Core Bus Corridor Scheme Compulsory Purchase Order 2023 at [www.templeoguerathfarnhamscheme.ie/](http://www.templeoguerathfarnhamscheme.ie/).

Uimhir ar an léarscáil a taisceadh ag an Údarás Number on map deposited at NTA	Méid, tuairisc agus suíomh na talún Quantity, description and situation of land
1066(1).1d	Achar (Area) (Ha): 0.00485 Achar (Area) (m2): 48.5 Tuairisc (Description): Garraí Tí (House Garden) Contae (County): Baile Átha Cliath (Dublin) Seoladh (Address): Argus House, 59 Terenure Road East, Dublin 6, D06 N1K6
1067(1).1d	Achar (Area) (Ha): 0.00035 Achar (Area) (m2): 3.5 Tuairisc (Description): Garraí Tí (House Garden) Contae (County): Baile Átha Cliath (Dublin) Seoladh (Address): Laneway between 59 & 57 Terenure Road East, Dublin 6
1068(1).1f	Achar (Area) (Ha): 0.14149 Achar (Area) (m2): 1414.9 Tuairisc (Description): Áineas (Recreational) Contae (County): Baile Átha Cliath (Dublin) Seoladh (Address): Green Area adjacent to 91 Rathfarnham Road, Rathfarnham, Dublin 14
1069(1).1d	Achar (Area) (Ha): 0.00130 Achar (Area) (m2): 13.0 Tuairisc (Description): Garraí Tí (House Garden) Contae (County): Baile Átha Cliath (Dublin) Seoladh (Address): Riverside, 71 Rathfarnham Road, Dublin 6W, D6W HF22
1070(1).1d	Achar (Area) (Ha): 0.00276 Achar (Area) (m2): 27.6 Tuairisc (Description): Garraí Tí (House Garden) Contae (County): Baile Átha Cliath (Dublin) Seoladh (Address): Rathlin, 69 Rathfarnham Road, Dublin 6W, D6W WR26
1071(1).1d	Achar (Area) (Ha): 0.00266 Achar (Area) (m2): 26.6 Tuairisc (Description): Garraí Tí (House Garden) Contae (County): Baile Átha Cliath (Dublin) Seoladh (Address): Arbutus, 67 Rathfarnham Road, Dublin 6W, D6W P621
1072(1).1d	Achar (Area) (Ha): 0.00268 Achar (Area) (m2): 26.8 Tuairisc (Description): Garraí Tí (House Garden) Contae (County): Baile Átha Cliath (Dublin) Seoladh (Address): Westport, 65 Rathfarnham Road, Dublin 6W, D6W YY48

Uimhir ar an léarscáil a taisceadh ag an Údarás Number on map deposited at NTA	Méid, tuairisc agus suíomh na talún Quantity, description and situation of land
1073(1).1d	Achar (Area) (Ha): 0.00237 Achar (Area) (m2): 23.7 Tuairisc (Description): Garraí Tí (House Garden) Contae (County): Baile Átha Cliath (Dublin) Seoladh (Address): Balmoral, 63 Rathfarnham Road, Dublin 6W, D6W YT96
1074(1).1d	Achar (Area) (Ha): 0.00212 Achar (Area) (m2): 21.2 Tuairisc (Description): Garraí Tí (House Garden) Contae (County): Baile Átha Cliath (Dublin) Seoladh (Address): 61 Rathfarnham Road, Dublin 6W, D6W FD92
1075(1).1h	Achar (Area) (Ha): 0.00053 Achar (Area) (m2): 5.3 Tuairisc (Description): Criosaithe (Zoned) Contae (County): Baile Átha Cliath (Dublin) Seoladh (Address): Landscaped area adjacent to 144 Rathfarnham Road, Rathfarnham, Dublin 14
1076(1).1d	Achar (Area) (Ha): 0.00078 Achar (Area) (m2): 7.8 Tuairisc (Description): Garraí Tí (House Garden) Contae (County): Baile Átha Cliath (Dublin) Seoladh (Address): Cranford, 125 Rathgar Road, Dublin 6, D06W2C3
1078(1).1e	Achar (Area) (Ha): 0.00101 Achar (Area) (m2): 10.1 Tuairisc (Description): Tuirlingtí Príobháideacha (Private Landings) Contae (County): Baile Átha Cliath (Dublin) Seoladh (Address): 45 Richmond Street South, Dublin 2
1079(1).1e	Achar (Area) (Ha): 0.00111 Achar (Area) (m2): 11.1 Tuairisc (Description): Tuirlingtí Príobháideacha (Private Landings) Contae (County): Baile Átha Cliath (Dublin) Seoladh (Address): 44 Richmond Street South, Dublin 2, D02 T284
1080(1).1e	Achar (Area) (Ha): 0.00015 Achar (Area) (m2): 1.5 Tuairisc (Description): Tuirlingtí Príobháideacha Private Landings Contae (County): Baile Átha Cliath (Dublin) Seoladh (Address): 38 Richmond Street South, Dublin 2,
1081(1).1e	Achar (Area) (Ha): 0.00045 Achar (Area) (m2): 4.5 Tuairisc (Description): Tuirlingtí Príobháideacha (Private Landings) Contae (County): Baile Átha Cliath (Dublin) Seoladh (Address): 37 Richmond Street South, Dublin 2

**SCEIDEAL / SCHEDULE  
CUID I / PART I**

**Tailte atá á bhFáil go Buan / Lands Being Permanently Acquired**

Talamh seachas talamh arb é atá ann teach nó tithe atá neamhoiriúnach chun daoine cónaí ann nó iontu agus nach féidir ar chostas réasúnach é nó iad a dhéanamh oiriúnach chun daoine cónaí ann nó iontu / Land other than land consisting of a house or houses unfit for human habitation and not capable of being rendered fit for human habitation at reasonable expense

Chun mionsonraí a fháil faoi Úinéirí nó Úinéirí Ainme, faoi Léasaithe nó Léasaithe Ainme nó faoi Áititheoirí, féach Ordú Ceannaigh Éigeantaigh na Scéime Croichonair-Bus ó Theach Mealóg/Ráth Fearnáin go Lár na Cathrach, 2023, ag [www.templeogueathfarnhamscheme.ie/](http://www.templeogueathfarnhamscheme.ie/) For details of the Owners or Reputed Owners/Lessees or Reputed Lessees/Occupiers please see the Templeogue / Rathfarnham to City Centre Core Bus Corridor Scheme Compulsory Purchase Order 2023 at [www.templeogueathfarnhamscheme.ie.](http://www.templeogueathfarnhamscheme.ie/)

Uimhir ar an léarscáil a taisceadh ag an Údarás Number on map deposited at NTA	Méid, tuairisc agus suíomh na talún Quantity, description and situation of land	Uimhir ar an léarscáil a taisceadh ag an Údarás Number on map deposited at NTA	Méid, tuairisc agus suíomh na talún Quantity, description and situation of land
1082(1).1e	Achar (Area) (Ha): 0.00009 Achar (Area) (m2): 0.9 Tuairisc (Description): Tuirlingtí Príobháideacha (Private Landings) Contae (County): Baile Átha Cliath (Dublin) Seoladh (Address): The Warehouse, 12 Richmond Row, Dublin 8, D08 F820	1090(1).1e	Achar (Area) (Ha): 0.00063 Achar (Area) (m2): 6.3 Tuairisc (Description): Tuirlingtí Príobháideacha (Private Landings) Contae (County): Baile Átha Cliath (Dublin) Seoladh (Address): 72/73 Camden Street Lower, Dublin 2, D02 E092
1083(1).1e	Achar (Area) (Ha): 0.00009 Achar (Area) (m2): 0.9 Tuairisc (Description): Tuirlingtí Príobháideacha (Private Landings) Contae (County): Baile Átha Cliath (Dublin) Seoladh (Address): 34/35 Richmond Street South, Dublin 2, D02 DC86	1092(1).1e	Achar (Area) (Ha): 0.00037 Achar (Area) (m2): 3.7 Tuairisc (Description): Tuirlingtí Príobháideacha (Private Landings) Contae (County): Baile Átha Cliath (Dublin) Seoladh (Address): 71 Camden Street Lower, Dublin 2, D02 H584
1084(1).1e	Achar (Area) (Ha): 0.00061 Achar (Area) (m2): 6.1 Tuairisc (Description): Tuirlingtí Príobháideacha (Private Landings) Contae (County): Baile Átha Cliath (Dublin) Seoladh (Address): 64 Camden Street Lower, Dublin 2, D02 EV90	1092(1).1e	Achar (Area) (Ha): 0.00039 Achar (Area) (m2): 3.9 Tuairisc (Description): Tuirlingtí Príobháideacha (Private Landings) Contae (County): Baile Átha Cliath (Dublin) Seoladh (Address): 70 Camden Street Lower, Dublin 2, D02 X864
1085(1).1e	Achar (Area) (Ha): 0.00062 Achar (Area) (m2): 6.2 Tuairisc (Description): Tuirlingtí Príobháideacha (Private Landings) Contae (County): Baile Átha Cliath (Dublin) Seoladh (Address): 63 Camden Street Lower, Dublin 2, D02 FF90	1093(1).1e	Achar (Area) (Ha): 0.00092 Achar (Area) (m2): 9.2 Tuairisc (Description): Tuirlingtí Príobháideacha (Private Landings) Contae (County): Baile Átha Cliath (Dublin) Seoladh (Address): 68 - 69 Camden Street Lower, Dublin 2
1086(1).1e	Achar (Area) (Ha): 0.00036 Achar (Area) (m2): 3.6 Tuairisc (Description): Tuirlingtí Príobháideacha (Private Landings) Contae (County): Baile Átha Cliath (Dublin) Seoladh (Address): 62 Camden Street Lower, Dublin 2, D02 X239	1094(1).1e	Achar (Area) (Ha): 0.00054 Achar (Area) (m2): 5.4 Tuairisc (Description): Tuirlingtí Príobháideacha (Private Landings) Contae (County): Baile Átha Cliath (Dublin) Seoladh (Address): 66 Camden Street Lower, Dublin 2, D02 X201
1087(1).1e	Achar (Area) (Ha): 0.00009 Achar (Area) (m2): 0.9 Tuairisc (Description): Tuirlingtí Príobháideacha (Private Landings) Contae (County): Baile Átha Cliath (Dublin) Seoladh (Address): 61 Camden Street Lower, Dublin 2, D02 VY17	1095(1).1e	Achar (Area) (Ha): 0.00057 Achar (Area) (m2): 5.7 Tuairisc (Description): Tuirlingtí Príobháideacha (Private Landings) Contae (County): Baile Átha Cliath (Dublin) Seoladh (Address): 65 Camden Street Lower, Dublin 2, D02 WN53
1088(1).1e	Achar (Area) (Ha): 0.00097 Achar (Area) (m2): 9.7 Tuairisc (Description): Tuirlingtí Príobháideacha (Private Landings) Contae (County): Baile Átha Cliath (Dublin) Seoladh (Address): 48 Harrington Street, Dublin 8, D08 A6Y9	1096(1).1e	Achar (Area) (Ha): 0.00600 Achar (Area) (m2): 60.0 Tuairisc (Description): Tuirlingtí Príobháideacha (Private Landings) Contae (County): Baile Átha Cliath (Dublin) Seoladh (Address): 84 - 87 The Camden, Camden Street Lower, Dublin 2
1089(1).1e	Achar (Area) (Ha): 0.00027 Achar (Area) (m2): 2.7 Tuairisc (Description): Tuirlingtí Príobháideacha (Private Landings) Contae (County): Baile Átha Cliath (Dublin) Seoladh (Address): 12 Camden Street Upper, Dublin 2, D02 TC59	1097(1).1e	Achar (Area) (Ha): 0.00103 Achar (Area) (m2): 10.3 Tuairisc (Description): Tuirlingtí Príobháideacha (Private Landings) Contae (County): Baile Átha Cliath (Dublin) Seoladh (Address): 83 & 83A Camden Street Lower, Dublin 2

## SCEIDEAL / SCHEDULE

## CUID I / PART I

## Tailte atá á bhFáil go Buan / Lands Being Permanently Acquired

Talamh seachas talamh arb é atá ann teach nó tithé atá neamhoiriúnach chun daoine cónaí ann nó iontu agus nach féidir ar chostas réasúnach é nó iad a dhéanamh oiriúnach chun daoine cónaí ann nó iontu / Land other than land consisting of a house or houses unfit for human habitation and not capable of being rendered fit for human habitation at reasonable expense

Chun mionsonraí a fháil faoi Úinéirí nó Úinéirí Ainme, faoi Léasaithe nó Léasaithe Ainme nó faoi Áititheoirí, féach Ordú Ceannaigh Éigeantaigh na Scéime Croichonair Bus ó Theach Mealóg/Ráth Fearnáin go Lár na Cathrach, 2023, ag [www.templeogueathfarnhamscheme.ie/](http://www.templeogueathfarnhamscheme.ie/) For details of the Owners or Reputed Owners/Lesseees or Reputed Lesseees/Occupiers please see the Templeogue / Rathfarnham to City Centre Core Bus Corridor Scheme Compulsory Purchase Order 2023 at [www.templeogueathfarnhamscheme.ie.](http://www.templeogueathfarnhamscheme.ie.)

Uimhir ar an léarscáil a taisceadh ag an Údarás Number on map deposited at NTA	Méid, tuairisc agus suíomh na talún Quantity, description and situation of land	Uimhir ar an léarscáil a taisceadh ag an Údarás Number on map deposited at NTA	Méid, tuairisc agus suíomh na talún Quantity, description and situation of land
1098(1).1e	Achar (Area) (Ha): 0.00050 Achar (Area) (m2): 5.0 Tuairisc (Description): Tuirlingtí Priobháideacha (Private Landings) Contae (County): Baile Átha Cliath (Dublin) Seoladh (Address): 67 Camden Street Lower, Dublin 2, D02 X026	1103(1).1d	Achar (Area) (Ha): 0.00093 Achar (Area) (m2): 9.3 Tuairisc (Description): Garraí Tí (House Garden) Contae (County): Baile Átha Cliath (Dublin) Seoladh (Address): Cranford House, 325 Templeogue Road, Dublin 6W, D6W HD56
1099(1).1e	Achar (Area) (Ha): 0.03175 Achar (Area) (m2): 317.5 Tuairisc (Description): Tuirlingtí Priobháideacha (Private Landings) Contae (County): Baile Átha Cliath (Dublin) Seoladh (Address): Green area at Redmond's Hill, Dublin 2	1104(1).1d	Achar (Area) (Ha): 0.00168 Achar (Area) (m2): 16.8 Tuairisc (Description): Garraí Tí (House Garden) Contae (County): Baile Átha Cliath (Dublin) Seoladh (Address): Sheelin House, 323 Templeogue Road, Dublin 6W, D6WXE08
1099(2).1h	Achar (Area) (Ha): 0.53459 Achar (Area) (m2): 5345.9 Tuairisc (Description): Criosaithe (Zoned) Contae (County): Baile Átha Cliath (Dublin) Seoladh (Address): Green Area at Rathdown Drive, Terenure, Dublin 6W	1105(1).1d	Achar (Area) (Ha): 0.00195 Achar (Area) (m2): 19.5 Tuairisc (Description): Garraí Tí (House Garden) Contae (County): Baile Átha Cliath (Dublin) Seoladh (Address): 321 Templeogue Road, Dublin 6W, D6WFT93
1099(3).1h	Achar (Area) (Ha): 0.04033 Achar (Area) (m2): 403.3 Tuairisc (Description): Criosaithe (Zoned) Contae (County): Baile Átha Cliath (Dublin) Seoladh (Address): Green Area at Rathdown Drive, Terenure, Dublin 6W	1106(1).1d	Achar (Area) (Ha): 0.00193 Achar (Area) (m2): 19.3 Tuairisc (Description): Garraí Tí (House Garden) Contae (County): Baile Átha Cliath (Dublin) Seoladh (Address): 319 Templeogue Road, Dublin 6W, D6WDE42
1099(4).1f	Achar (Area) (Ha): 0.29916 Achar (Area) (m2): 2991.6 Tuairisc (Description): Áineas (Recreational) Contae (County): Baile Átha Cliath (Dublin) Seoladh (Address): Bushy Park, Terenure, Dublin 6W	1107(1).1d	Achar (Area) (Ha): 0.00240 Achar (Area) (m2): 24.0 Tuairisc (Description): Garraí Tí (House Garden) Contae (County): Baile Átha Cliath (Dublin) Seoladh (Address): 14 Fortrose Park, Templeogue, Dublin 6W, D6W PT72
1100(1).1f	Achar (Area) (Ha): 0.00755 Achar (Area) (m2): 75.5 Tuairisc (Description): Áineas (Recreational) Contae (County): Baile Átha Cliath (Dublin) Seoladh (Address): Green Area at Rossmore Crescent, Templeogue Road, Dublin 6W	1108(1).1d	Achar (Area) (Ha): 0.00038 Achar (Area) (m2): 3.8 Tuairisc (Description): Garraí Tí (House Garden) Contae (County): Baile Átha Cliath (Dublin) Seoladh (Address): 15 Fortrose Park, Templeogue, Dublin 6W, D6WRW35
1101(1).1a	Achar (Area) (Ha): 0.00119 Achar (Area) (m2): 11.9 Tuairisc (Description): Bóthar Rochtana (Access Road) Contae (County): Baile Átha Cliath (Dublin) Seoladh (Address): Cheeverstown Centre, Templeogue Road, Dublin 6W, D6W TX36	1109(1).1d	Achar (Area) (Ha): 0.00013 Achar (Area) (m2): 1.3 Tuairisc (Description): Garraí Tí (House Garden) Contae (County): Baile Átha Cliath (Dublin) Seoladh (Address): Drumroe, 317 Templeogue Road, Dublin 6W, D6W XE93
1102(1).1d	Achar (Area) (Ha): 0.00002 Achar (Area) (m2): 0.2 Tuairisc (Description): Garraí Tí (House Garden) Contae (County): Baile Átha Cliath (Dublin) Seoladh (Address): 327 Templeogue Road, Dublin 6W, D6W CA36	1110(1).1d	Achar (Area) (Ha): 0.01234 Achar (Area) (m2): 123.4 Tuairisc (Description): Garraí Tí (House Garden) Contae (County): Baile Átha Cliath (Dublin) Seoladh (Address): Green Area at Ashfield Place, Templeogue Road, Dublin 6W

## SCEIDEAL / SCHEDULE

## CUID I / PART I

## Tailte atá á bhFáil go Buan / Lands Being Permanently Acquired

Talamh seachas talamh arb é atá ann teach nó tithe atá neamhoiriúnach chun daoine cónaí ann nó iontu agus nach féidir ar chostas réasúnach é nó iad a dhéanamh oiriúnach chun daoine cónaí ann nó iontu / Land other than land consisting of a house or houses unfit for human habitation and not capable of being rendered fit for human habitation at reasonable expense

Chun mionsonraí a fháil faoi Úinéirí nó Úinéirí Ainme, faoi Léasaithe nó Léasaithe Ainme nó faoi Áititheoirí, féach Ordú Ceannaigh Éigeantaigh na Scéime Croíchonair Bus ó Theach Mealóg/Ráth Fearnáin go Lár na Cathrach, 2023, ag [www.templeoguerathfarnhamscheme.ie/](http://www.templeoguerathfarnhamscheme.ie/) For details of the Owners or Reputed Owners/Lessees or Reputed Lessees/Occupiers please see the Templeogue / Rathfarnham to City Centre Core Bus Corridor Scheme Compulsory Purchase Order 2023 at [www.templeoguerathfarnhamscheme.ie.](http://www.templeoguerathfarnhamscheme.ie/)

Uimhir ar an léarscáil a taisceadh ag an Údarás Number on map deposited at NTA	Méid, tuairisc agus suíomh na talún Quantity, description and situation of land	Uimhir ar an léarscáil a taisceadh ag an Údarás Number on map deposited at NTA	Méid, tuairisc agus suíomh na talún Quantity, description and situation of land
1111(1).1d	Achar (Area) (Ha): 0.00634 Achar (Area) (m2): 63.4 Tuairisc (Description): Garraí Tí (House Garden) Contae (County): Baile Átha Cliath (Dublin) Seoladh (Address): Burnsley, 315 Templeogue Road, Dublin 6W, D6W F765	1114(1).1d	Achar (Area) (Ha): 0.00298 Achar (Area) (m2): 29.8 Tuairisc (Description): Garraí Tí (House Garden) Contae (County): Baile Átha Cliath (Dublin) Seoladh (Address): 44 Templeogue Road, Dublin 6W, D6W NH33
1112(1).1d	Achar (Area) (Ha): 0.00371 Achar (Area) (m2): 37.1 Tuairisc (Description): Garraí Tí (House Garden) Contae (County): Baile Átha Cliath (Dublin) Seoladh (Address): Clashmore, 313 Templeogue Road, Dublin 6W, D6W ER28	1115(1).1d	Achar (Area) (Ha): 0.00204 Achar (Area) (m2): 20.4 Tuairisc (Description): Garraí Tí (House Garden) Contae (County): Baile Átha Cliath (Dublin) Seoladh (Address): 45 Templeogue Road, Dublin 6W, D6W NR25
1113(1).1d	Achar (Area) (Ha): 0.00336 Achar (Area) (m2): 33.6 Tuairisc (Description): Garraí Tí (House Garden) Contae (County): Baile Átha Cliath (Dublin) Seoladh (Address): Glendale, 311 Templeogue Road, Dublin 6W, D6W N276	1116(1).1d	Achar (Area) (Ha): 0.00254 Achar (Area) (m2): 25.4 Tuairisc (Description): Garraí Tí (House Garden) Contae (County): Baile Átha Cliath (Dublin) Seoladh (Address): 11 Fortrose Park, Templeogue, Dublin 6W, D6W T254

## SCEIDEAL / SCHEDULE

## CUID II / PART II

## Tailte atá á bhFáil go Sealadach / Lands Being Temporarily Acquired

Talamh seachas talamh arb é atá ann teach nó tithe atá neamhoiriúnach chun daoine cónaí ann nó iontu agus nach féidir ar chostas réasúnach é nó iad a dhéanamh oiriúnach chun daoine cónaí ann nó iontu / Land other than land consisting of a house or houses unfit for human habitation and not capable of being rendered fit for human habitation at reasonable expense

Chun mionsonraí a fháil faoi Úinéirí nó Úinéirí Ainme, faoi Léasaithe nó Léasaithe Ainme nó faoi Áititheoirí, féach Ordú Ceannaigh Éigeantaigh na Scéime Croíchonair Bus ó Theach Mealóg/Ráth Fearnáin go Lár na Cathrach, 2023, ag [www.templeoguerathfarnhamscheme.ie/](http://www.templeoguerathfarnhamscheme.ie/) For details of the Owners or Reputed Owners/Lessees or Reputed Lessees/Occupiers please see the Blanchardstown to City Centre Core Bus Corridor Scheme Compulsory Purchase Order 2023 at [www.templeoguerathfarnhamscheme.ie.](http://www.templeoguerathfarnhamscheme.ie/)

Uimhir ar an léarscáil a taisceadh ag an Údarás Number on map deposited at NTA	Méid, tuairisc agus suíomh na talún Quantity, description and situation of land	Uimhir ar an léarscáil a taisceadh ag an Údarás Number on map deposited at NTA	Méid, tuairisc agus suíomh na talún Quantity, description and situation of land
1001(2).2f	Achar (Area) (Ha): 0.07874 Achar (Area) (m2): 787.4 Tuairisc (Description): Áineas (Recreational) Contae (County): Baile Átha Cliath (Dublin) Seoladh (Address): Rathfarnham Castle, Grange Road, Rathfarnham, Dublin 14	1002(2).2f	Achar (Area) (Ha): 0.03811 Achar (Area) (m2): 381.1 Tuairisc (Description): Áineas (Recreational) Contae (County): Baile Átha Cliath (Dublin) Seoladh (Address): Rathfarnham Castle, Grange Road, Rathfarnham, Dublin 14

**SCEIDEAL / SCHEDULE  
CUID II / PART II**

**Tailte atá á bhFáil go Sealadach / Lands Being Temporarily Acquired**

Talamh seachas talamh arb é atá ann teach nó tithe atá neamhoiriúnach chun daoine cónaí ann nó iontu agus nach féidir ar chostas réasúnach é nó iad a dhéanamh oiriúnach chun daoine cónaí ann nó iontu / Land other than land consisting of a house or houses unfit for human habitation and not capable of being rendered fit for human habitation at reasonable expense

Chun mionsonraí a fháil faoi Úinéirí nó Úinéirí Ainme, faoi Léasaithe nó Léasaithe Ainme nó faoi Áititheoirí, féach Ordú Ceannaigh Éigeantaigh na Scéime Croíchonair Bús ó Theach Mealóg/Ráth Fearnáin go Lár na Cathrach, 2023, ag [www.templeogueathfarnhamscheme.ie/](http://www.templeogueathfarnhamscheme.ie/) For details of the Owners or Reputed Owners/Lessees or Reputed Lessees/Occupiers please see the Templeogue / Rathfarnham to City Centre Core Bus Corridor Scheme Compulsory Purchase Order 2023 at [www.templeogueathfarnhamscheme.ie/](http://www.templeogueathfarnhamscheme.ie/).

Uimhir ar an léarscáil a taisceadh ag an Údarás Number on map deposited at NTA	Méid, tuairisc agus suíomh na talún Quantity, description and situation of land	Uimhir ar an léarscáil a taisceadh ag an Údarás Number on map deposited at NTA	Méid, tuairisc agus suíomh na talún Quantity, description and situation of land
1004(1).2f	Achar (Area) (Ha): 0.49915 Achar (Area) (m2): 4991.5 Tuairisc (Description): Áineas (Recreational) Contae (County): Baile Átha Cliath (Dublin) Seoladh (Address): Bushy Park Car Park & Green Area, Dodder View Road, Rathfarnham, Dublin 14	1012(2).2d	Achar (Area) (Ha): 0.00194 Achar (Area) (m2): 19.4 Tuairisc (Description): Garraí Tí (House Garden) Contae (County): Baile Átha Cliath (Dublin) Seoladh (Address): 145 Rathfarnham Road, Dublin 14, D14 F384
1006(1).2d	Achar (Area) (Ha): 0.00047 Achar (Area) (m2): 4.7 Tuairisc (Description): Garraí Tí (House Garden) Contae (County): Baile Átha Cliath (Dublin) Seoladh (Address): Entrance to Village Green, Rathfarnham, Dublin 14	1013(2).2d	Achar (Area) (Ha): 0.00192 Achar (Area) (m2): 19.2 Tuairisc (Description): Garraí Tí (House Garden) Contae (County): Baile Átha Cliath (Dublin) Seoladh (Address): 143 Rathfarnham Road, Dublin 14, D14 YC56
1007(2).2c	Achar (Area) (Ha): 0.00428 Achar (Area) (m2): 42.8 Tuairisc (Description): Tráchtáil (Commercial) Contae (County): Baile Átha Cliath (Dublin) Seoladh (Address): Rathfarnham Service Station, Rathfarnham Road, Dublin 14, D14 V2P4	1014(2).2d	Achar (Area) (Ha): 0.00187 Achar (Area) (m2): 18.7 Tuairisc (Description): Garraí Tí (House Garden) Contae (County): Baile Átha Cliath (Dublin) Seoladh (Address): 141 Rathfarnham Road, Dublin 14, D14 KN28
1007(3).2c	Achar (Area) (Ha): 0.00177 Achar (Area) (m2): 17.7 Tuairisc (Description): Tráchtáil (Commercial) Contae (County): Baile Átha Cliath (Dublin) Seoladh (Address): Rathfarnham Service Station, Rathfarnham Road, Dublin 14, D14 V2P4	1015(2).2h	Achar (Area) (Ha): 0.00273 Achar (Area) (m2): 27.3 Tuairisc (Description): Criosaithe (Zoned) Contae (County): Baile Átha Cliath (Dublin) Seoladh (Address): Green area at entrance to Rathfarnham Wood, Dublin 14
1008(2).2d	Achar (Area) (Ha): 0.00188 Achar (Area) (m2): 18.8 Tuairisc (Description): Garraí Tí (House Garden) Contae (County): Baile Átha Cliath (Dublin) Seoladh (Address): Adelaide, 153 Rathfarnham Road, Dublin 14, D14 F439	1015(4).2h	Achar (Area) (Ha): 0.00146 Achar (Area) (m2): 14.6 Tuairisc (Description): Criosaithe (Zoned) Contae (County): Baile Átha Cliath (Dublin) Seoladh (Address): Green area at entrance to Rathfarnham Wood, Dublin 14
1009(2).2c	Achar (Area) (Ha): 0.00198 Achar (Area) (m2): 19.8 Tuairisc (Description): Tráchtáil (Commercial) Contae (County): Baile Átha Cliath (Dublin) Seoladh (Address): 151 Rathfarnham Road, Dublin 14, D14 Y8W3	1016(2).2d	Achar (Area) (Ha): 0.00233 Achar (Area) (m2): 23.3 Tuairisc (Description): Garraí Tí (House Garden) Contae (County): Baile Átha Cliath (Dublin) Seoladh (Address): 8 Rathfarnham Wood, Dublin 14, D14 C1W3
1010(2).2d	Achar (Area) (Ha): 0.00190 Achar (Area) (m2): 19.0 Tuairisc (Description): Garraí Tí (House Garden) Contae (County): Baile Átha Cliath (Dublin) Seoladh (Address): 149 Rathfarnham Road, Dublin 14, D14 PX38	1017(2).2d	Achar (Area) (Ha): 0.00299 Achar (Area) (m2): 29.9 Tuairisc (Description): Garraí Tí (House Garden) Contae (County): Baile Átha Cliath (Dublin) Seoladh (Address): 9 Rathfarnham Wood, Dublin 14, D14 Y0H2
1011(2).2c	Achar (Area) (Ha): 0.00197 Achar (Area) (m2): 19.7 Tuairisc (Description): Tráchtáil (Commercial) Contae (County): Baile Átha Cliath (Dublin) Seoladh (Address): 147 Rathfarnham Road, Dublin 14, D14 K6N6	1018(2).2d	Achar (Area) (Ha): 0.00331 Achar (Area) (m2): 33.1 Tuairisc (Description): Garraí Tí (House Garden) Contae (County): Baile Átha Cliath (Dublin) Seoladh (Address): 10 Rathfarnham Wood, Dublin 14, D14 T2P5



**SCEIDEAL / SCHEDULE  
CUID II / PART II**

**Tailte atá á bhFáil go Sealadach / Lands Being Temporarily Acquired**

Talamh seachas talamh arb é atá ann teach nó tithe atá neamhoiriúnach chun daoine cónaí ann nó iontu agus nach féidir ar chostas réasúnach é nó iad a dhéanamh oiriúnach chun daoine cónaí ann nó iontu / Land other than land consisting of a house or houses unfit for human habitation and not capable of being rendered fit for human habitation at reasonable expense

Chun mionsonraí a fháil faoi Úinéirí nó Úinéirí Ainme, faoi Léasaithe nó Léasaithe Ainme nó faoi Áititheoirí, féach Ordú Ceannaigh Éigeantaigh na Scéime Croíchonair Bus ó Theach Mealóg/Ráth Fearnáin go Lár na Cathrach, 2023, ag [www.templeogueathfarnhamscheme.ie/](http://www.templeogueathfarnhamscheme.ie/) For details of the Owners or Reputed Owners/Lesseees or Reputed Lesseees/Occupiers please see the Templeogue / Rathfarnham to City Centre Core Bus Corridor Scheme Compulsory Purchase Order 2023 at [www.templeogueathfarnhamscheme.ie/](http://www.templeogueathfarnhamscheme.ie/).

Uimhir ar an léarscáil a taisceadh ag an Údarás Number on map deposited at NTA	Méid, tuairisc agus suíomh na talún Quantity, description and situation of land	Uimhir ar an léarscáil a taisceadh ag an Údarás Number on map deposited at NTA	Méid, tuairisc agus suíomh na talún Quantity, description and situation of land
1019(2).2d	Achar (Area) (Ha): 0.00313 Achar (Area) (m2): 31.3 Tuairisc (Description): Contae (County): Seoladh (Address): Garraí Tí (House Garden) Baile Átha Cliath (Dublin) 11 Rathfarnham Wood, Dublin 14, D14 X5X4	1028(2).2d	Achar (Area) (Ha): 0.00128 Achar (Area) (m2): 12.8 Tuairisc (Description): Contae (County): Seoladh (Address): Garraí Tí (House Garden) Baile Átha Cliath (Dublin) Ardandra, 51 Rathfarnham Road, Dublin 6W, D6W N970
1020(2).2d	Achar (Area) (Ha): 0.00350 Achar (Area) (m2): 35.0 Tuairisc (Description): Contae (County): Seoladh (Address): Garraí Tí (House Garden) Baile Átha Cliath (Dublin) 12 Rathfarnham Wood, Dublin 14, D14 E4Y1	1029(2).2d	Achar (Area) (Ha): 0.00401 Achar (Area) (m2): 40.1 Tuairisc (Description): Contae (County): Seoladh (Address): Garraí Tí (House Garden) Baile Átha Cliath (Dublin) 50 Rathfarnham Road, Dublin 6W, D6W PF88
1021(3).2f	Achar (Area) (Ha): 0.31836 Achar (Area) (m2): 3183.6 Tuairisc (Description): Contae (County): Seoladh (Address): Áineas (Recreational) Baile Átha Cliath (Dublin) Site Compound at Spawell Road, adjacent to Dodder Valley Car Park, Templeogue, Dublin 6W.	1030(2).2d	Achar (Area) (Ha): 0.00203 Achar (Area) (m2): 20.3 Tuairisc (Description): Contae (County): Seoladh (Address): Garraí Tí (House Garden) Baile Átha Cliath (Dublin) 48 Rathfarnham Road, Dublin 6W, D6W VY84
1023(2).2h	Achar (Area) (Ha): 0.00107 Achar (Area) (m2): 10.7 Tuairisc (Description): Contae (County): Seoladh (Address): Criosaithe (Zoned) Baile Átha Cliath (Dublin) Green area at entrance to Rathfarnham Wood, Dublin 14	1031(2).2d	Achar (Area) (Ha): 0.00210 Achar (Area) (m2): 21.0 Tuairisc (Description): Contae (County): Seoladh (Address): Garraí Tí (House Garden) Baile Átha Cliath (Dublin) 46 Rathfarnham Road, Dublin 6W, D6W F348
1024(2).2d	Achar (Area) (Ha): 0.00278 Achar (Area) (m2): 27.8 Tuairisc (Description): Contae (County): Seoladh (Address): Garraí Tí (House Garden) Baile Átha Cliath (Dublin) 59 Rathfarnham Road, Dublin 6, D6W AK70	1032(2).2d	Achar (Area) (Ha): 0.00204 Achar (Area) (m2): 20.4 Tuairisc (Description): Contae (County): Seoladh (Address): Garraí Tí (House Garden) Baile Átha Cliath (Dublin) 44 Rathfarnham Road, Dublin 6W, D6W PX79
1025(2).2d	Achar (Area) (Ha): 0.00248 Achar (Area) (m2): 24.8 Tuairisc (Description): Contae (County): Seoladh (Address): Garraí Tí (House Garden) Baile Átha Cliath (Dublin) 57 Rathfarnham Road, Terenure, Dublin 6W, D6W HY28	1033(2).2d	Achar (Area) (Ha): 0.00211 Achar (Area) (m2): 21.1 Tuairisc (Description): Contae (County): Seoladh (Address): Garraí Tí (House Garden) Baile Átha Cliath (Dublin) Little Sisters Of The Assumption Convent, 42 Rathfarnham Road, Dublin 6W, D6W NY67
1026(2).2d	Achar (Area) (Ha): 0.00254 Achar (Area) (m2): 25.4 Tuairisc (Description): Contae (County): Seoladh (Address): Garraí Tí (House Garden) Baile Átha Cliath (Dublin) 55 Rathfarnham Road, Dublin 6W, D6W X314	1034(2).2d	Achar (Area) (Ha): 0.00153 Achar (Area) (m2): 15.3 Tuairisc (Description): Contae (County): Seoladh (Address): Garraí Tí (House Garden) Baile Átha Cliath (Dublin) Laneway off Rathfarnham Road, Terenure, Dublin 6W
1027(2).2d	Achar (Area) (Ha): 0.00396 Achar (Area) (m2): 39.6 Tuairisc (Description): Contae (County): Seoladh (Address): Garraí Tí (House Garden) Baile Átha Cliath (Dublin) Trevi, 53 Rathfarnham Road, Dublin 6W, D6W T027	1035(2).2d	Achar (Area) (Ha): 0.00208 Achar (Area) (m2): 20.8 Tuairisc (Description): Contae (County): Seoladh (Address): Garraí Tí (House Garden) Baile Átha Cliath (Dublin) 40 Rathfarnham Road, Dublin 6W, D6W A037

**SCEIDEAL / SCHEDULE  
CUID II / PART II**

**Tailte atá á bhFáil go Sealadach / Lands Being Temporarily Acquired**

Talamh seachas talamh arb é atá ann teach nó tithe atá neamhoiriúnach chun daoine cónaí ann nó iontu agus nach féidir ar chostas réasúnach é nó iad a dhéanamh oiriúnach chun daoine cónaí ann nó iontu / Land other than land consisting of a house or houses unfit for human habitation and not capable of being rendered fit for human habitation at reasonable expense

Chun mionsonraí a fháil faoi Úinéirí nó Úinéirí Ainme, faoi Léasaithe nó Léasaithe Ainme nó faoi Áititheoirí, féach Ordú Ceannaigh Éigeantaigh na Scéime Croíchonair Bus ó Theach Mealóg/Ráth Fearnáin go Lár na Cathrach, 2023, ag [www.templeoguerathfarnhamscheme.ie/](http://www.templeoguerathfarnhamscheme.ie/) For details of the Owners or Reputed Owners/Lessees or Reputed Lessees/Occupiers please see the Templeogue / Rathfarnham to City Centre Core Bus Corridor Scheme Compulsory Purchase Order 2023 at [www.templeoguerathfarnhamscheme.ie.](http://www.templeoguerathfarnhamscheme.ie/)

Uimhir ar an léarscáil a taisceadh ag an Údarás Number on map deposited at NTA	Méid, tuairisc agus suíomh na talún Quantity, description and situation of land	Uimhir ar an léarscáil a taisceadh ag an Údarás Number on map deposited at NTA	Méid, tuairisc agus suíomh na talún Quantity, description and situation of land
1036(2).2d	Achar (Area) (Ha): 0.00209 Achar (Area) (m2): 20.9 Tuairisc (Description): Contae (County): Seoladh (Address): Garraí Tí (House Garden) Baile Átha Cliath (Dublin) 38 Rathfarnham Road, Dublin 6W, D6W AW74	1044(2).2c	Achar (Area) (Ha): 0.00313 Achar (Area) (m2): 31.3 Tuairisc (Description): Contae (County): Seoladh (Address): Tráchtáil (Commercial) Baile Átha Cliath (Dublin) 74 & 74a Terenure Road East, Terenure, Dublin 6
1037(2).2d	Achar (Area) (Ha): 0.00204 Achar (Area) (m2): 20.4 Tuairisc (Description): Contae (County): Seoladh (Address): Garraí Tí (House Garden) Baile Átha Cliath (Dublin) 36 Rathfarnham Road, Dublin 6W, D6W W302	1045(2).2d	Achar (Area) (Ha): 0.00060 Achar (Area) (m2): 6.0 Tuairisc (Description): Contae (County): Seoladh (Address): Garraí Tí (House Garden) Baile Átha Cliath (Dublin) 9 Town Houses, Terenure Road East, Dublin 6, D06 DY89
1038(2).2d	Achar (Area) (Ha): 0.00213 Achar (Area) (m2): 21.3 Tuairisc (Description): Contae (County): Seoladh (Address): Garraí Tí (House Garden) Baile Átha Cliath (Dublin) 34 Rathfarnham Road, Dublin 6W, D6W A250	1046(2).2d	Achar (Area) (Ha): 0.00106 Achar (Area) (m2): 10.6 Tuairisc (Description): Contae (County): Seoladh (Address): Garraí Tí (House Garden) Baile Átha Cliath (Dublin) 8 Town Houses, Terenure Road East, Dublin 6, D06 P3Y2
1039(2).2i	Achar (Area) (Ha): 0.00745 Achar (Area) (m2): 74.5 Tuairisc (Description): Contae (County): Seoladh (Address): Pobal (Community) Baile Átha Cliath (Dublin) Terenure Synagogue, 32A Rathfarnham Road, Dublin 6W, D6W VE89	1047(2).2d	Achar (Area) (Ha): 0.00107 Achar (Area) (m2): 10.7 Tuairisc (Description): Contae (County): Seoladh (Address): Garraí Tí (House Garden) Baile Átha Cliath (Dublin) 7 Town Houses, Terenure Road East, Dublin 6, D06 A3T9
1040(2).2d	Achar (Area) (Ha): 0.00348 Achar (Area) (m2): 34.8 Tuairisc (Description): Contae (County): Seoladh (Address): Garraí Tí (House Garden) Baile Átha Cliath (Dublin) Earls Court, 80 Terenure Road East, Dublin 6	1048(2).2d	Achar (Area) (Ha): 0.00107 Achar (Area) (m2): 10.7 Tuairisc (Description): Contae (County): Seoladh (Address): Garraí Tí (House Garden) Baile Átha Cliath (Dublin) 6 Town Houses, Terenure Road East, Dublin 6, D06 F7V2
1041(2).2d	Achar (Area) (Ha): 0.00401 Achar (Area) (m2): 40.1 Tuairisc (Description): Contae (County): Seoladh (Address): Garraí Tí (House Garden) Baile Átha Cliath (Dublin) Rockview, 78 Terenure Road East, Dublin 6, D06 X785	1049(2).2d	Achar (Area) (Ha): 0.00106 Achar (Area) (m2): 10.6 Tuairisc (Description): Contae (County): Seoladh (Address): Garraí Tí (House Garden) Baile Átha Cliath (Dublin) 5 Town Houses, Terenure Road East, Dublin 6, D06 N9W4
1042(2).2d	Achar (Area) (Ha): 0.00167 Achar (Area) (m2): 16.7 Tuairisc (Description): Contae (County): Seoladh (Address): Garraí Tí (House Garden) Baile Átha Cliath (Dublin) Annsley Lodge, 76A Terenure Road East, Terenure, Dublin 6	1050(2).2d	Achar (Area) (Ha): 0.00108 Achar (Area) (m2): 10.8 Tuairisc (Description): Contae (County): Seoladh (Address): Garraí Tí (House Garden) Baile Átha Cliath (Dublin) 4 Town Houses, Terenure Road East, Dublin 6, D06 W2A0
1043(2).2d	Achar (Area) (Ha): 0.00225 Achar (Area) (m2): 22.5 Tuairisc (Description): Contae (County): Seoladh (Address): Garraí Tí (House Garden) Baile Átha Cliath (Dublin) Cara House, 76 Terenure Road East, Dublin 6, D06 WT28	1051(2).2d	Achar (Area) (Ha): 0.00106 Achar (Area) (m2): 10.6 Tuairisc (Description): Contae (County): Seoladh (Address): Garraí Tí (House Garden) Baile Átha Cliath (Dublin) 3 Town Houses, Terenure Road East, Dublin 6, D06 Y4A7

**SCEIDEAL / SCHEDULE  
CUID II / PART II**

**Tailte atá á bhFáil go Sealadach / Lands Being Temporarily Acquired**

Talamh seachas talamh arb é atá ann teach nó tithé atá neamhoiriúnach chun daoine cónaí ann nó iontu agus nach féidir ar chostas réasúnach é nó iad a dhéanamh oiriúnach chun daoine cónaí ann nó iontu / Land other than land consisting of a house or houses unfit for human habitation and not capable of being rendered fit for human habitation at reasonable expense

Chun mionsonraí a fháil faoi Úinéirí nó Úinéirí Ainme, faoi Léasaithe nó Léasaithe Ainme nó faoi Áititheoirí, féach Ordú Ceannaigh Éigeantaigh na Scéime Croíchonair Bus ó Theach Mealóg/Ráth Fearnáin go Lár na Cathrach, 2023, ag [www.templeogueathfarnhamscheme.ie/](http://www.templeogueathfarnhamscheme.ie/) For details of the Owners or Reputed Owners/Lessees or Reputed Lessees/Occupiers please see the Templeogue / Rathfarnham to City Centre Core Bus Corridor Scheme Compulsory Purchase Order 2023 at [www.templeogueathfarnhamscheme.ie/](http://www.templeogueathfarnhamscheme.ie/)

Uimhir ar an léarscáil a taisceadh ag an Údarás Number on map deposited at NTA	Méid, tuairisc agus suíomh na talún Quantity, description and situation of land
1052(2).2d	Achar (Area) (Ha): 0.00106 Achar (Area) (m2): 10.6 Tuairisc (Description): Contae (County): Seoladh (Address): Garraí Tí (House Garden) Baile Átha Cliath (Dublin) 2 Town Houses, Terenure Road East, Dublin 6, D06 N2V0
1053(2).2d	Achar (Area) (Ha): 0.00146 Achar (Area) (m2): 14.6 Tuairisc (Description): Contae (County): Seoladh (Address): Garraí Tí (House Garden) Baile Átha Cliath (Dublin) 1 Town Houses, Terenure Road East, Dublin 6, D06 A2Y9
1054(2).2d	Achar (Area) (Ha): 0.00203 Achar (Area) (m2): 20.3 Tuairisc (Description): Contae (County): Seoladh (Address): Garraí Tí (House Garden) Baile Átha Cliath (Dublin) 69 Terenure Road East, Dublin 6, D06 P6C6
1056(2).2e	Achar (Area) (Ha): 0.00061 Achar (Area) (m2): 6.1 Tuairisc (Description): Contae (County): Seoladh (Address): Tuirlingtí Priobháideacha (Private Landings) Baile Átha Cliath (Dublin) Eaton Hall, Terenure Road North, Dublin 6W
1057(2).2d	Achar (Area) (Ha): 0.00165 Achar (Area) (m2): 16.5 Tuairisc (Description): Contae (County): Seoladh (Address): Garraí Tí (House Garden) Baile Átha Cliath (Dublin) Hildon House, 62 Terenure Road East, Dublin 6
1058(2).2d	Achar (Area) (Ha): 0.00914 Achar (Area) (m2): 91.4 Tuairisc (Description): Contae (County): Seoladh (Address): Garraí Tí (House Garden) Baile Átha Cliath (Dublin) Beaumont House, 60 Terenure Road East, Dublin 6
1059(2).2d	Achar (Area) (Ha): 0.00191 Achar (Area) (m2): 19.1 Tuairisc (Description): Contae (County): Seoladh (Address): Garraí Tí (House Garden) Baile Átha Cliath (Dublin) Brookline, 58 Terenure Road East, Dublin 6
1060(2).2d	Achar (Area) (Ha): 0.00158 Achar (Area) (m2): 15.8 Tuairisc (Description): Contae (County): Seoladh (Address): Garraí Tí (House Garden) Baile Átha Cliath (Dublin) 56 Terenure Road East, Dublin 6

Uimhir ar an léarscáil a taisceadh ag an Údarás Number on map deposited at NTA	Méid, tuairisc agus suíomh na talún Quantity, description and situation of land
1061(2).2d	Achar (Area) (Ha): 0.00611 Achar (Area) (m2): 61.1 Tuairisc (Description): Contae (County): Seoladh (Address): Garraí Tí (House Garden) Baile Átha Cliath (Dublin) Triest House, 54 Terenure Road East, Dublin 6
1062(2).2d	Achar (Area) (Ha): 0.00197 Achar (Area) (m2): 19.7 Tuairisc (Description): Contae (County): Seoladh (Address): Garraí Tí (House Garden) Baile Átha Cliath (Dublin) 67 Terenure Road East, Dublin 6, D06 HP60.
1063(2).2d	Achar (Area) (Ha): 0.00191 Achar (Area) (m2): 19.1 Tuairisc (Description): Contae (County): Seoladh (Address): Garraí Tí (House Garden) Baile Átha Cliath (Dublin) 65 Terenure Road East, Dublin 6, D06 T2R0
1064(2).2d	Achar (Area) (Ha): 0.00201 Achar (Area) (m2): 20.1 Tuairisc (Description): Contae (County): Seoladh (Address): Garraí Tí (House Garden) Baile Átha Cliath (Dublin) Roslin, 63 Terenure Road East, Dublin 6, D06 EW73
1065(2).2d	Achar (Area) (Ha): 0.00206 Achar (Area) (m2): 20.6 Tuairisc (Description): Contae (County): Seoladh (Address): Garraí Tí (House Garden) Baile Átha Cliath (Dublin) Glenarm, 61 Terenure Road East, Dublin 6, D06 KD30
1066(2).2d	Achar (Area) (Ha): 0.00496 Achar (Area) (m2): 49.6 Tuairisc (Description): Contae (County): Seoladh (Address): Garraí Tí (House Garden) Baile Átha Cliath (Dublin) Argus House, 59 Terenure Road East, Dublin 6, D06 N1K6
1067(2).2d	Achar (Area) (Ha): 0.00115 Achar (Area) (m2): 11.5 Tuairisc (Description): Contae (County): Seoladh (Address): Garraí Tí (House Garden) Baile Átha Cliath (Dublin) Laneway between 59 & 57 Terenure Road East, Dublin 6
1069(2).2d	Achar (Area) (Ha): 0.00945 Achar (Area) (m2): 94.5 Tuairisc (Description): Contae (County): Seoladh (Address): Garraí Tí (House Garden) Baile Átha Cliath (Dublin) Riverside, 71 Rathfarnham Road, Dublin 6W, D6W HF22

**SCEIDEAL / SCHEDULE  
CUID II / PART II**

**Tailte atá á bhFáil go Sealadach / Lands Being Temporarily Acquired**

Talamh seachas talamh arb é atá ann teach nó tithe atá neamhoiriúnach chun daoine cónaí ann nó iontu agus nach féidir ar chostas réasúnach é nó iad a dhéanamh oiriúnach chun daoine cónaí ann nó iontu / Land other than land consisting of a house or houses unfit for human habitation and not capable of being rendered fit for human habitation at reasonable expense

Chun mionsonraí a fháil faoi Úinéirí nó Úinéirí Ainme, faoi Léasaithe nó Léasaithe Ainme nó faoi Áititheoirí, féach Ordú Ceannaigh Éigeantaigh na Scéime Croíchonair Bus ó Theach Mealóg/Ráth Fearnáin go Lár na Cathrach, 2023, ag [www.templeogueathfarnhamscheme.ie/](http://www.templeogueathfarnhamscheme.ie/) For details of the Owners or Reputed Owners/Lesseees or Reputed Lesseees/Occupiers please see the Templeogue / Rathfarnham to City Centre Core Bus Corridor Scheme Compulsory Purchase Order 2023 at [www.templeogueathfarnhamscheme.ie](http://www.templeogueathfarnhamscheme.ie).

Uimhir ar an léarscáil a taisceadh ag an Údarás Number on map deposited at NTA	Méid, tuairisc agus suíomh na talún Quantity, description and situation of land	Uimhir ar an léarscáil a taisceadh ag an Údarás Number on map deposited at NTA	Méid, tuairisc agus suíomh na talún Quantity, description and situation of land
1070(2).2d	Achar (Area) (Ha): 0.00486 Achar (Area) (m2): 48.6 Tuairisc (Description): Garraí Tí (House Garden) Contae (County): Baile Átha Cliath (Dublin) Seoladh (Address): Rathlin, 69 Rathfarnham Road, Dublin 6W, D6W WR26	1078(2).2s	Achar (Area) (Ha): 0.00143 Achar (Area) (m2): 14.3 Tuairisc (Description): Siléir (Cellar) Contae (County): Baile Átha Cliath (Dublin) Seoladh (Address): 45 Richmond Street South, Dublin 2
1071(2).2d	Achar (Area) (Ha): 0.01221 Achar (Area) (m2): 122.1 Tuairisc (Description): Garraí Tí (House Garden) Contae (County): Baile Átha Cliath (Dublin) Seoladh (Address): Arbutus, 67 Rathfarnham Road, Dublin 6W, D6W P621	1078(3).2s	Achar (Area) (Ha): 0.00101 Achar (Area) (m2): 10.1 Tuairisc (Description): Siléir (Cellar) Contae (County): Baile Átha Cliath (Dublin) Seoladh (Address): 45 Richmond Street South, Dublin 2
1072(2).2d	Achar (Area) (Ha): 0.00532 Achar (Area) (m2): 53.2 Tuairisc (Description): Garraí Tí (House Garden) Contae (County): Baile Átha Cliath (Dublin) Seoladh (Address): Westport, 65 Rathfarnham Road, Dublin 6W, D6W YY48	1079(2).2s	Achar (Area) (Ha): 0.00150 Achar (Area) (m2): 15.0 Tuairisc (Description): Siléir (Cellar) Contae (County): Baile Átha Cliath (Dublin) Seoladh (Address): 44 Richmond Street South, Dublin 2, D02 T284
1073(2).2d	Achar (Area) (Ha): 0.00445 Achar (Area) (m2): 44.5 Tuairisc (Description): Garraí Tí (House Garden) Contae (County): Baile Átha Cliath (Dublin) Seoladh (Address): Balmoral, 63 Rathfarnham Road, Dublin 6W, D6W YT96	1079(3).2s	Achar (Area) (Ha): 0.00111 Achar (Area) (m2): 11.1 Tuairisc (Description): Siléir (Cellar) Contae (County): Baile Átha Cliath (Dublin) Seoladh (Address): 44 Richmond Street South, Dublin 2, D02 T284
1074(2).2d	Achar (Area) (Ha): 0.00218 Achar (Area) (m2): 21.8 Tuairisc (Description): Garraí Tí (House Garden) Contae (County): Baile Átha Cliath (Dublin) Seoladh (Address): 61 Rathfarnham Road, Dublin 6W, D6W FD92	1099(5).2f	Achar (Area) (Ha): 0.11909 Achar (Area) (m2): 1190.9 Tuairisc (Description): Áineas (Recreational) Contae (County): Baile Átha Cliath (Dublin) Seoladh (Address): Bushy Park, Terenure, Dublin 6W
1075(2).2h	Achar (Area) (Ha): 0.00152 Achar (Area) (m2): 15.2 Tuairisc (Description): Criosaithe (Zoned) Contae (County): Baile Átha Cliath (Dublin) Seoladh (Address): Landscaped area adjacent to 144 Rathfarnham Road, Rathfarnham, Dublin 14	1100(2).2f	Achar (Area) (Ha): 0.01654 Achar (Area) (m2): 165.4 Tuairisc (Description): Áineas (Recreational) Contae (County): Baile Átha Cliath (Dublin) Seoladh (Address): Green Area at Rossmore Crescent, Templeogue Road, Dublin 6W
1076(2).2d	Achar (Area) (Ha): 0.00086 Achar (Area) (m2): 8.6 Tuairisc (Description): Garraí Tí (House Garden) Contae (County): Baile Átha Cliath (Dublin) Seoladh (Address): Cranford, 125 Rathgar Road, Dublin 6, D06W2C3	1101(2).2a	Achar (Area) (Ha): 0.00397 Achar (Area) (m2): 39.7 Tuairisc (Description): Bóthar Rochtana (Access Road) Contae (County): Baile Átha Cliath (Dublin) Seoladh (Address): Cheeverstown Centre, Templeogue Road, Dublin 6W, D6W TX36
1077(1).2d	Achar (Area) (Ha): 0.00550 Achar (Area) (m2): 55.0 Tuairisc (Description): Garraí Tí (House Garden) Contae (County): Baile Átha Cliath (Dublin) Seoladh (Address): Entrance to Lissenfield, Rathmines Road Lower, Dublin 6	1102(2).2d	Achar (Area) (Ha): 0.00072 Achar (Area) (m2): 7.2 Tuairisc (Description): Garraí Tí (House Garden) Contae (County): Baile Átha Cliath (Dublin) Seoladh (Address): 327 Templeogue Road, Dublin 6W, D6W CA36

**SCEIDEAL / SCHEDULE  
CUID II / PART II**

**Tailte atá á bhFáil go Sealadach / Lands Being Temporarily Acquired**

Talamh seachas talamh arb é atá ann teach nó tithe atá neamhoiriúnach chun daoine cónaí ann nó iontu agus nach féidir ar chostas réasúnach é nó iad a dhéanamh oiriúnach chun daoine cónaí ann nó iontu / Land other than land consisting of a house or houses unfit for human habitation and not capable of being rendered fit for human habitation at reasonable expense

Chun mionsonraí a fháil faoi Úinéirí nó Úinéirí Ainme, faoi Léasaithe nó Léasaithe Ainme nó faoi Áititheoirí, féach Ordú Ceannaigh Éigeantaigh na Scéime Croichonair Bus ó Theach Mealóg/Ráth Fearnáin go Lár na Cathrach, 2023, ag [www.templeoguerathfarnhamscheme.ie](http://www.templeoguerathfarnhamscheme.ie)/ For details of the Owners or Reputed Owners/Lessees or Reputed Lessees/Occupiers please see the Templeogue / Rathfarnham to City Centre Core Bus Corridor Scheme Compulsory Purchase Order 2023 at [www.templeoguerathfarnhamscheme.ie](http://www.templeoguerathfarnhamscheme.ie).

Uimhir ar an léarscáil a taisceadh ag an Údarás Number on map deposited at NTA	Méid, tuairisc agus suíomh na talún Quantity, description and situation of land
1103(2).2d	Achar (Area) (Ha): 0.00650 Achar (Area) (m2): 65.0 Tuairisc (Description): Garraí Tí (House Garden) Contae (County): Baile Átha Cliath (Dublin) Seoladh (Address): Cranford House, 325 Templeogue Road, Dublin 6W, D6W HD56
1104(2).2d	Achar (Area) (Ha): 0.00403 Achar (Area) (m2): 40.3 Tuairisc (Description): Garraí Tí (House Garden) Contae (County): Baile Átha Cliath (Dublin) Seoladh (Address): Sheelin House, 323 Templeogue Road, Dublin 6W, D6WXE08
1105(2).2d	Achar (Area) (Ha): 0.00389 Achar (Area) (m2): 38.9 Tuairisc (Description): Garraí Tí (House Garden) Contae (County): Baile Átha Cliath (Dublin) Seoladh (Address): 321 Templeogue Road, Dublin 6W, D6WFT93
1106(2).2d	Achar (Area) (Ha): 0.00388 Achar (Area) (m2): 38.8 Tuairisc (Description): Garraí Tí (House Garden) Contae (County): Baile Átha Cliath (Dublin) Seoladh (Address): 319 Templeogue Road, Dublin 6W, D6WDE42
1107(2).2d	Achar (Area) (Ha): 0.00552 Achar (Area) (m2): 55.2 Tuairisc (Description): Garraí Tí (House Garden) Contae (County): Baile Átha Cliath (Dublin) Seoladh (Address): 14 Fortrose Park, Templeogue, Dublin 6W, D6W PT72
1108(2).2d	Achar (Area) (Ha): 0.00416 Achar (Area) (m2): 41.6 Tuairisc (Description): Garraí Tí (House Garden) Contae (County): Baile Átha Cliath (Dublin) Seoladh (Address): 15 Fortrose Park, Templeogue, Dublin 6W, D6WRW35
1109(2).2d	Achar (Area) (Ha): 0.00123 Achar (Area) (m2): 12.3 Tuairisc (Description): Garraí Tí (House Garden) Contae (County): Baile Átha Cliath (Dublin) Seoladh (Address): Drumroe, 317 Templeogue Road, Dublin 6W, D6W XE93

Uimhir ar an léarscáil a taisceadh ag an Údarás Number on map deposited at NTA	Méid, tuairisc agus suíomh na talún Quantity, description and situation of land
1110(2).2d	Achar (Area) (Ha): 0.01174 Achar (Area) (m2): 117.4 Tuairisc (Description): Garraí Tí (House Garden) Contae (County): Baile Átha Cliath (Dublin) Seoladh (Address): Green Area at Ashfield Place, Templeogue Road, Dublin 6W
1111(2).2d	Achar (Area) (Ha): 0.00566 Achar (Area) (m2): 56.6 Tuairisc (Description): Garraí Tí (House Garden) Contae (County): Baile Átha Cliath (Dublin) Seoladh (Address): Burnsley, 315 Templeogue Road, Dublin 6W, D6W F765
1112(2).2d	Achar (Area) (Ha): 0.00357 Achar (Area) (m2): 35.7 Tuairisc (Description): Garraí Tí (House Garden) Contae (County): Baile Átha Cliath (Dublin) Seoladh (Address): Clashmore, 313 Templeogue Road, Dublin 6W, D6W ER28
1113(2).2d	Achar (Area) (Ha): 0.00343 Achar (Area) (m2): 34.3 Tuairisc (Description): Garraí Tí (House Garden) Contae (County): Baile Átha Cliath (Dublin) Seoladh (Address): Glendale, 311 Templeogue Road, Dublin 6W, D6W N276
1114(2).2d	Achar (Area) (Ha): 0.00322 Achar (Area) (m2): 32.2 Tuairisc (Description): Garraí Tí (House Garden) Contae (County): Baile Átha Cliath (Dublin) Seoladh (Address): 44 Templeogue Road, Dublin 6W, D6W NH33
1115(2).2d	Achar (Area) (Ha): 0.00242 Achar (Area) (m2): 24.2 Tuairisc (Description): Garraí Tí (House Garden) Contae (County): Baile Átha Cliath (Dublin) Seoladh (Address): 45 Templeogue Road, Dublin 6W, D6W NR25
1116(2).2d	Achar (Area) (Ha): 0.00303 Achar (Area) (m2): 30.3 Tuairisc (Description): Garraí Tí (House Garden) Contae (County): Baile Átha Cliath (Dublin) Seoladh (Address): 11 Fortrose Park, Templeogue, Dublin 6W, D6W T254

Chun mionsonraí a fháil faoi Úinéirí nó Úinéirí Ainme, faoi Léasaithe nó Léasaithe Ainme nó faoi Áititheoirí, féach Ordú Ceannaigh Éigeantaigh na Scéime Croichonair Bus ó Theach Mealóg/Ráth Fearnáin go Lár na Cathrach, 2023, ag [www.templeogueathfarnhamscheme.ie](http://www.templeogueathfarnhamscheme.ie)/ For details of the Owners or Reputed Owners/Lessees or Reputed Lessees/Occupiers please see the Templeogue / Rathfarnham to City Centre Core Bus Corridor Scheme Compulsory Purchase Order 2023 at [www.templeogueathfarnhamscheme.ie](http://www.templeogueathfarnhamscheme.ie).

**SCEIDEAL / SCHEDULE  
CUID III (Roinn A) / PART III (Section A)**

Tuairisc ar na cearta slí poiblí a mhúchfar  
Description of public rights of way to be extinguished

Tagairt Reference	Tuairisc Description
AA	Na cearta uile thar an gcuid sin den cheart slí poiblí ar an gcosán atá ann cheana a nascann le Carrchlós Bhóthar na Gráinsí i gContae Átha Cliath agus idir línte AA1 agus AA2, a léirítear i ndath corcra ar an tagairt Léarscáile Taiscthe 1012-DM-0001. All rights over that section of the public right of way on the existing footpath connecting to the Grange Road Car Park in the County of Dublin and between the lines AA1 and AA2, shown coloured purple on the Deposit Map reference 1012-DM-0001.
AB	Na cearta uile thar an gcuid sin den cheart slí poiblí ag an gcéad bhóthar rochtana chuig an mbóthar rochtana/seirbhíse lena bhfreastalaítear ar 250-258 Bóthar Theach Mealóg i gContae Bhaile Átha Cliath agus idir línte AB1 agus AB2, a léirítear i ndath corcra ar an tagairt Léarscáile Taiscthe 1012-DM-0017. All rights over that section of the public right of way at the first access to the access/service road serving 250-258 Templeogue Road in the County of Dublin and between the lines AB1 and AB2, shown coloured purple on the Deposit Map reference 1012-DM-0017.
AC	Na cearta uile thar an gcuid sin den cheart slí poiblí ar Bhóthar Theach Mealóg i ngar do Chéide Ráth an Duín i gContae Átha Cliath agus idir línte AC1 agus AC2, a léirítear i ndath corcra ar an tagairt Léarscáile Taiscthe 1012-DM-0019. All rights over that section of the public right of way on Templeogue Road adjacent to Rathdown Drive in the County of Dublin and between the lines AC1 and AC2, shown coloured purple on the Deposit Map reference 1012-DM-0019.

**SCEIDEAL / SCHEDULE  
CUID III (Roinn B) / PART III (Section B)**

Tuairisc ar na cearta slí poiblí a shrianfar nó a gcuirfear isteach orthu ar shlí eile

Description of public rights of way to be restricted or otherwise interfered with

Tagairt Reference	Tuairisc Description
BA	Cearta uile an tráchta feithiclí (lena n-áirítear rothair cos agus rothair eile) siar (ó Bhóthar an Ghoirt Aird go Bóthar Ráth Garbh) thar an gcuid sin den cheart slí poiblí ag an láthair lastála/slioslána ag an acomhal idir Bóthar an Ghoirt Aird agus Bóthar Ráth Garbh i gContae Bhaile Átha Cliath agus idir línte BA1 agus BA2, a léirítear i ndath glas ar an tagairt Léarscáile taiscthe 1012-DM-0008. All rights of vehicular traffic (including pedal cycles and other bicycles) in a westbound direction (from Highfield Road to Rathgar Road) over that section of the public right of way at the loading area/slip lane at the junction of Highfield Road and Rathgar Road in the County of Dublin and between the lines BA1 and BA2, shown coloured green on the deposit map reference 1012-DM-0008.
BB	Cearta uile an tráchta feithiclí (seachas rothair cos agus rothair eile) siar (ó Bhóthar Ráth Maonais Íochtarach go Páirc Mhic Liam) thar an gcuid sin den cheart slí poiblí ar Pháirc Mhic Liam ag an acomhal le Bóthar Ráth Maonais Íochtarach i gContae Bhaile Átha Cliath agus idir línte BB1 agus BB2, a léirítear i ndath glas ar an tagairt Léarscáile taiscthe 1012-DM-0009. All rights of vehicular traffic (except pedal cycles and other bicycles) in a westbound direction (from Rathmines Road Lower to Williams Park) over that section of the public right of way on Williams Park at the junction with Rathmines Road Lower in the County of Dublin and between the lines BB1 and BB2, shown coloured green on the deposit map reference 1012-DM-0009.

BC	Cearta uile an tráchta feithiclí (seachas rothair cos agus rothair eile) thar an gcuid sin den cheart slí poiblí ar Ascaill Chnocán Aoibhinn Íochtarach ag an acomhal le Cnoc Richmond i gContae Bhaile Átha Cliath agus idir línte BC1 agus BC2, a léirítear i ndath glas ar an tagairt Léarscáile taiscthe 1012-DM-0010. All rights of vehicular traffic (except pedal cycles and other bicycles) over that section of the public right of way on Mountpleasant Avenue Lower at the junction with Richmond Hill in the County of Dublin and between the lines BC1 and BC2, shown coloured green on the deposit map reference 1012-DM-0010.
BD	Cearta uile an tráchta feithiclí (seachas rothair cos agus rothair eile) thar an gcuid sin den cheart slí poiblí ar Shráid Lennox ag an acomhal le Sráid Richmond Theas i gContae Bhaile Átha Cliath agus idir línte BD1 agus BD2, a léirítear i ndath glas ar an tagairt Léarscáile taiscthe 1012-DM-0011. All rights of vehicular traffic (except pedal cycles and other bicycles) over that section of the public right of way on Lennox Street at the junction with Richmond Street South in the County of Dublin and between the lines BD1 and BD2, shown coloured green on the deposit map reference 1012-DM-0011.
BE	Cearta uile an tráchta feithiclí (lena n-áirítear rothair cos agus rothair eile) siar (ó Shráid an Easpaig go Cnoc Réamainn) thar an gcuid sin den cheart slí poiblí ag an acomhal idir Sráid an Easpaig agus Cnoc Réamainn i gContae Bhaile Átha Cliath agus idir línte BE1 agus BE2, a léirítear i ndath glas ar an tagairt Léarscáile taiscthe 1012-DM-0013. All rights of vehicular traffic (including pedal cycles and other bicycles) in a westbound direction (from Bishop Street to Redmond's Hill) over that section of the public right of way at the junction of Bishop Street and Redmond's Hill in the County of Dublin and between the lines BE1 and BE2, shown coloured green on the deposit map reference 1012-DM-0013.
BF	Cearta uile an tráchta feithiclí (lena n-áirítear rothair cos agus rothair eile) thar an gcuid sin den cheart slí poiblí ag an dara bóthar rochtana chuig an mbóthar rochtana/seirbhíse lena bhfreastalaítear ar 250-258 Bóthar Theach Mealóg i gContae Bhaile Átha Cliath agus idir línte BF1 agus BF2, a léirítear i ndath glas ar an tagairt Léarscáile taiscthe 1012-DM-0017. All rights of vehicular traffic (including pedal cycles and other bicycles) over that section of the public right of way at the second access to the access/service road serving 250-258 Templeogue Road in the County of Dublin and between the lines BF1 and BF2, shown coloured green on the deposit map reference 1012-DM-0017.

**SCEIDEAL / SCHEDULE  
CUID IV (Roinn A) / PART IV (Section A)**

Tuairisc ar na cearta príobháideacha a bheidh le fáil  
Description of private rights to be acquired

Tagairt Reference	Tuairisc Description
CA	Na cearta príobháideacha uile laistigh den limistéar atá scáthaithe i ndath oráiste agus ar a bhfuil an lipéad 'CA' ar an tagairt Léarscáile taiscthe 1012-DM-0001 a bhaineann le tagairt plásáin 1023(1).1h, mar a thuiriscítear i gCuid I den Sceideal. All private rights within the area shaded orange and labelled 'CA' on the deposit map reference 1012-DM-0001 associated with plot reference 1023(1).1h as described in Part I of the Schedule.
CB	Na cearta príobháideacha uile laistigh den limistéar atá scáthaithe i ndath oráiste agus ar a bhfuil an lipéad 'CB' ar an tagairt Léarscáile taiscthe 1012-DM-0002 a bhaineann le tagairt plásáin 1002(1).1f, mar a thuiriscítear i gCuid I den Sceideal. All private rights within the area shaded orange and labelled 'CB' on the deposit map reference 1012-DM-0002 associated with plot reference 1002(1).1f as described in Part I of the Schedule.

Chun mionsonraí a fháil faoi Úinéirí nó Úinéirí Ainme, faoi Léasaithe nó Léasaithe Ainme nó faoi Áititheoirí, féach Ordú Ceannaigh Éigeantaigh na Scéime Croichonair Bus ó Theach Mealóg/Ráth Fearnáin go Lár na Cathrach, 2023, ag [www.templeogueathfarnhamscheme.ie/](http://www.templeogueathfarnhamscheme.ie/) For details of the Owners or Reputed Owners/Lesseees or Reputed Lesseees/Occupiers please see the Templeogue / Rathfarnham to City Centre Core Bus Corridor Scheme Compulsory Purchase Order 2023 at [www.templeogueathfarnhamscheme.ie/](http://www.templeogueathfarnhamscheme.ie/).

CC	Na cearta príobháideacha uile laistigh den limistéar atá scáthaithe i ndath oráiste agus ar a bhfuil an lipéad 'CC' ar an tagairt léarscáile taiscthe 1012-DM-0002 a bhaineann le tagairt plásáin 1005(1).1f, mar a thuairiscítear i gCuid I den Sceideal. All private rights within the area shaded orange and labelled 'CC' on the deposit map reference 1012-DM-0002 associated with plot reference 1005(1).1f as described in Part I of the Schedule.
CD	Na cearta príobháideacha uile laistigh den limistéar atá scáthaithe i ndath oráiste agus ar a bhfuil an lipéad 'CD' ar an tagairt léarscáile taiscthe 1012-DM-0006 a bhaineann le tagairt plásáin 1034(1).1d, mar a thuairiscítear i gCuid I den Sceideal. All private rights within the area shaded orange and labelled 'CD' on the deposit map reference 1012-DM-0006 associated with plot reference 1034(1).1d as described in Part I of the Schedule.
CE	Na cearta príobháideacha uile laistigh den limistéar atá scáthaithe i ndath oráiste agus ar a bhfuil an lipéad 'CE' ar an tagairt léarscáile taiscthe 1012-DM-0007 a bhaineann le tagairt plásáin 1067(1).1d, mar a thuairiscítear i gCuid I den Sceideal. All private rights within the area shaded orange and labelled 'CE' on the deposit map reference 1012-DM-0007 associated with plot reference 1067(1).1d as described in Part I of the Schedule.
CF	Na cearta príobháideacha uile laistigh den limistéar atá scáthaithe i ndath oráiste agus ar a bhfuil an lipéad 'CF' ar an tagairt léarscáile taiscthe 1012-DM-0014 a bhaineann le tagairt plásáin 1056(1).1e, mar a thuairiscítear i gCuid I den Sceideal. All private rights within the area shaded orange and labelled 'CF' on the deposit map reference 1012-DM-0014 associated with plot reference 1056(1).1e as described in Part I of the Schedule.
CG	Na cearta príobháideacha uile laistigh den limistéar atá scáthaithe i ndath oráiste agus ar a bhfuil an lipéad 'CG' ar an tagairt léarscáile taiscthe 1012-DM-0016 a bhaineann le tagairt plásáin 1097(1).1f, mar a thuairiscítear i gCuid I den Sceideal. All private rights within the area shaded orange and labelled 'CG' on the deposit map reference 1012-DM-0016 associated with plot reference 1097(1).1f as described in Part I of the Schedule.

**SCEIDEAL / SCHEDULE**

**CUID IV (Roinn B) / PART IV (Section B)**

Tuairisc ar na cearta príobháideacha a shrianfar nó a gcuirfear isteach orthu ar shlí eile

Description of private rights to be restricted or otherwise interfered with

Tagairt Reference	Tuairisc Description
	NÍ ANN DI NONE SUCH

**SCEIDEAL / SCHEDULE**

**CUID IV (Roinn C) / PART IV (Section C)**

Tuairisc ar na cearta príobháideacha a shrianfar nó a gcuirfear isteach orthu ar shlí eile go sealadach

Description of private rights to be temporarily restricted or otherwise interfered with

Tagairt Reference	Tuairisc Description
EA	Na cearta príobháideacha uile laistigh den limistéar atá scáthaithe i ndath gorm agus ar a bhfuil an lipéad 'EA' ar an tagairt léarscáile taiscthe 1012-DM-0001 a bhaineann le tagairt plásáin 1023(2).2h, mar a thuairiscítear i gCuid II den Sceideal. All private rights within the area shaded blue and labelled 'EA' on the deposit map reference 1012-DM-0001 associated with plot reference 1023(2).2h as described in Part II of the Schedule.

**SCEIDEAL / SCHEDULE**

**CUID IV (Roinn C) / PART IV (Section C)**

Tuairisc ar na cearta príobháideacha a shrianfar nó a gcuirfear isteach orthu ar shlí eile go sealadach

Description of private rights to be temporarily restricted or otherwise interfered with

Tagairt Reference	Tuairisc Description
EB	Na cearta príobháideacha uile laistigh den limistéar atá scáthaithe i ndath gorm agus ar a bhfuil an lipéad 'EB' ar an tagairt léarscáile taiscthe 1012-DM-0002 a bhaineann le tagairt plásáin 1002(2).2f, mar a thuairiscítear i gCuid II den Sceideal. All private rights within the area shaded blue and labelled 'EB' on the deposit map reference 1012-DM-0002 associated with plot reference 1002(2).2f as described in Part II of the Schedule.
EC	Na cearta príobháideacha uile laistigh den limistéar atá scáthaithe i ndath gorm agus ar a bhfuil an lipéad 'EC' ar an tagairt léarscáile taiscthe 1012-DM-0003 a bhaineann le tagairt plásáin 1006(1).2d, mar a thuairiscítear i gCuid II den Sceideal. All private rights within the area shaded blue and labelled 'EC' on the deposit map reference 1012-DM-0003 associated with plot reference 1006(1).2d as described in Part II of the Schedule.
ED	Na cearta príobháideacha uile laistigh den limistéar atá scáthaithe i ndath gorm agus ar a bhfuil an lipéad 'ED' ar an tagairt léarscáile taiscthe 1012-DM-0006 a bhaineann le tagairt plásáin 1034(2).2d, mar a thuairiscítear i gCuid II den Sceideal. All private rights within the area shaded blue and labelled 'ED' on the deposit map reference 1012-DM-0006 associated with plot reference 1034(2).2d as described in Part II of the Schedule.
EE	Na cearta príobháideacha uile laistigh den limistéar atá scáthaithe i ndath gorm agus ar a bhfuil an lipéad 'EE' ar an tagairt léarscáile taiscthe 1012-DM-0007 a bhaineann le tagairt plásáin 1067(2).2d, mar a thuairiscítear i gCuid II den Sceideal. All private rights within the area shaded blue and labelled 'EE' on the deposit map reference 1012-DM-0007 associated with plot reference 1067(2).2d as described in Part II of the Schedule.
EF	Na cearta príobháideacha uile laistigh den limistéar atá scáthaithe i ndath gorm agus ar a bhfuil an lipéad 'EF' ar an tagairt léarscáile taiscthe 1012-DM-0014 a bhaineann le tagairt plásáin 1056(2).2e, mar a thuairiscítear i gCuid II den Sceideal. All private rights within the area shaded blue and labelled 'EF' on the deposit map reference 1012-DM-0014 associated with plot reference 1056(2).2e as described in Part II of the Schedule.
EG	Na cearta príobháideacha uile laistigh den limistéar atá scáthaithe i ndath gorm agus ar a bhfuil an lipéad 'EG' ar an tagairt léarscáile taiscthe 1012-DM-0016 a bhaineann le tagairt plásáin 1097(2).2f, mar a thuairiscítear i gCuid II den Sceideal. All private rights within the area shaded blue and labelled 'EG' on the deposit map reference 1012-DM-0016 associated with plot reference 1097(2).2f as described in Part II of the Schedule.